

CXCR5 Antibody
Rabbit mAb
Catalog # AP92019

Specification

CXCR5 Antibody - Product Information

Application	WB, FC, ICC
Primary Accession	P32302
Reactivity	Rat
Clonality	Monoclonal
Other Names	
BLR1; CD185; Cxcr5; MDR15;	
Isotype	Rabbit IgG
Host	Rabbit
Calculated MW	41955 Da

CXCR5 Antibody - Additional Information

Purification	Affinity-chromatography
Immunogen	A synthesized peptide derived from human CXCR5
Description	Cytokine receptor that binds to B-lymphocyte chemoattractant (BLC). Involved in B-cell migration into B-cell follicles of spleen and Peyer patches but not into those of mesenteric or peripheral lymph nodes. May have a regulatory function in Burkitt lymphoma (BL) lymphomagenesis and/or B-cell differentiation.
Storage Condition and Buffer	Rabbit IgG in phosphate buffered saline , pH 7.4, 150mM NaCl, 0.02% sodium azide and 50% glycerol. Store at +4°C short term. Store at -20°C long term. Avoid freeze / thaw cycle.

CXCR5 Antibody - Protein Information

Name CXCR5

Synonyms BLR1, MDR15

Function

Cytokine receptor that binds to B-lymphocyte chemoattractant (BLC). Involved in B-cell migration into B-cell follicles of spleen and Peyer patches but not into those of mesenteric or peripheral lymph nodes. May have a regulatory function in Burkitt lymphoma (BL) lymphomagenesis and/or B-cell differentiation.

Cellular Location

Cell membrane; Multi-pass membrane protein.

Tissue Location

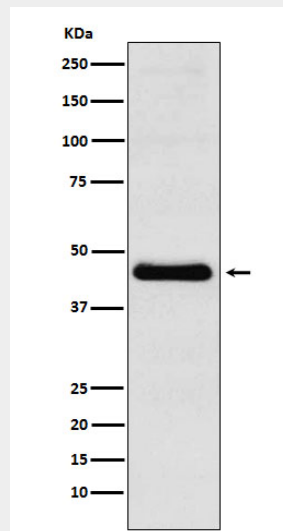
Expression in mature B-cells and Burkitt lymphoma cells

CXCR5 Antibody - Protocols

Provided below are standard protocols that you may find useful for product applications.

- [Western Blot](#)
- [Blocking Peptides](#)
- [Dot Blot](#)
- [Immunohistochemistry](#)
- [Immunofluorescence](#)
- [Immunoprecipitation](#)
- [Flow Cytometry](#)
- [Cell Culture](#)

CXCR5 Antibody - Images



Western blot analysis of CXCR5 expression in Molt4 cell lysate.