

**Bcl10 Antibody**  
Rabbit mAb  
Catalog # AP92017

## Specification

---

### Bcl10 Antibody - Product Information

Application	WB, IHC, ICC, IP
Primary Accession	<a href="#">O95999</a>
Clonality	Monoclonal
<b>Other Names</b>	
BCL10; CARMEN; CIPER; CLAP; c-E10; mE10;	
Isotype	Rabbit IgG
Host	Rabbit
Calculated MW	26252 Da

### Bcl10 Antibody - Additional Information

Purification	Affinity-chromatography
Immunogen	A synthesized peptide derived from human Bcl10
Description	Promotes apoptosis, pro-caspase-9 maturation and activation of NF-kappa-B via NIK and IKK. May be an adapter protein between upstream TNFR1-TRADD-RIP complex and the downstream NIK-IKK-IKAP complex. Is a substrate for MALT1.
Storage Condition and Buffer	Rabbit IgG in phosphate buffered saline , pH 7.4, 150mM NaCl, 0.02% sodium azide and 50% glycerol. Store at +4°C short term. Store at -20°C long term. Avoid freeze / thaw cycle.

### Bcl10 Antibody - Protein Information

**Name** BCL10 {ECO:0000303|PubMed:9989495, ECO:0000312|HGNC:HGNC:989}

#### Function

Plays a key role in both adaptive and innate immune signaling by bridging CARD domain-containing proteins to immune activation (PubMed: [10187770](http://www.uniprot.org/citations/10187770), PubMed: [10364242](http://www.uniprot.org/citations/10364242), PubMed: [10400625](http://www.uniprot.org/citations/10400625), PubMed: [24074955](http://www.uniprot.org/citations/24074955), PubMed: [25365219](http://www.uniprot.org/citations/25365219)). Acts by channeling adaptive and innate immune signaling downstream of CARD domain-containing proteins CARD9, CARD11 and CARD14 to activate NF-kappa-B and MAP kinase p38 (MAPK11, MAPK12, MAPK13 and/or MAPK14) pathways which stimulate expression of genes encoding pro-inflammatory cytokines and chemokines (PubMed:

<http://www.uniprot.org/citations/24074955> target="\_blank">24074955</a>). Recruited by activated CARD domain-containing proteins: homooligomerized CARD domain-containing proteins form a nucleating helical template that recruits BCL10 via CARD-CARD interaction, thereby promoting polymerization of BCL10, subsequent recruitment of MALT1 and formation of a CBM complex (PubMed: <a href="http://www.uniprot.org/citations/24074955" target="\_blank">24074955</a>). This leads to activation of NF-kappa-B and MAP kinase p38 (MAPK11, MAPK12, MAPK13 and/or MAPK14) pathways which stimulate expression of genes encoding pro-inflammatory cytokines and chemokines (PubMed: <a href="http://www.uniprot.org/citations/18287044" target="\_blank">18287044</a>, PubMed: <a href="http://www.uniprot.org/citations/24074955" target="\_blank">24074955</a>, PubMed: <a href="http://www.uniprot.org/citations/27777308" target="\_blank">27777308</a>). Activated by CARD9 downstream of C-type lectin receptors; CARD9-mediated signals are essential for antifungal immunity (PubMed: <a href="http://www.uniprot.org/citations/26488816" target="\_blank">26488816</a>). Activated by CARD11 downstream of T-cell receptor (TCR) and B-cell receptor (BCR) (PubMed: <a href="http://www.uniprot.org/citations/18264101" target="\_blank">18264101</a>, PubMed: <a href="http://www.uniprot.org/citations/18287044" target="\_blank">18287044</a>, PubMed: <a href="http://www.uniprot.org/citations/24074955" target="\_blank">24074955</a>, PubMed: <a href="http://www.uniprot.org/citations/27777308" target="\_blank">27777308</a>). Promotes apoptosis, pro-caspase-9 maturation and activation of NF-kappa-B via NIK and IKK (PubMed: <a href="http://www.uniprot.org/citations/10187815" target="\_blank">10187815</a>).

#### Cellular Location

Cytoplasm, perinuclear region. Membrane raft. Note=Appears to have a perinuclear, compact and filamentous pattern of expression. Also found in the nucleus of several types of tumor cells. Colocalized with DPP4 in membrane rafts.

#### Tissue Location

Ubiquitous..

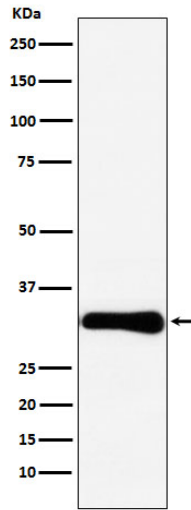
#### Bcl10 Antibody - Protocols

Provided below are standard protocols that you may find useful for product applications.

- [Western Blot](#)
- [Blocking Peptides](#)
- [Dot Blot](#)
- [Immunohistochemistry](#)
- [Immunofluorescence](#)
- [Immunoprecipitation](#)
- [Flow Cytometry](#)
- [Cell Culture](#)

#### Bcl10 Antibody - Images





Western blot analysis of Bcl10 expression in HeLa cell lysate.