

**CBS Antibody**  
Rabbit mAb  
Catalog # AP92016

## Specification

---

### CBS Antibody - Product Information

Application	WB, IHC, ICC
Primary Accession	<a href="#">P35520</a>
Clonality	Monoclonal
<b>Other Names</b>	
HIP4; CBS;	
Isotype	Rabbit IgG
Host	Rabbit
Calculated MW	60587 Da

### CBS Antibody - Additional Information

Purification	Affinity-chromatography
Immunogen	A synthesized peptide derived from human CBS
Description	Only known pyridoxal phosphate-dependent enzyme that contains heme. Important regulator of hydrogen sulfide, especially in the brain, utilizing cysteine instead of serine to catalyze the formation of hydrogen sulfide. Hydrogen sulfide is a gastratransmitter with signaling and cytoprotective effects such as acting as a neuromodulator in the brain to protect neurons against hypoxic injury.
Storage Condition and Buffer	Rabbit IgG in phosphate buffered saline , pH 7.4, 150mM NaCl, 0.02% sodium azide and 50% glycerol. Store at +4°C short term. Store at -20°C long term. Avoid freeze / thaw cycle.

### CBS Antibody - Protein Information

**Name** CBS

#### Function

Hydro-lyase catalyzing the first step of the transsulfuration pathway, where the hydroxyl group of L-serine is displaced by L-homocysteine in a beta-replacement reaction to form L-cystathionine, the precursor of L-cysteine. This catabolic route allows the elimination of L-methionine and the toxic metabolite L-homocysteine (PubMed: [20506325](http://www.uniprot.org/citations/20506325), PubMed: [23974653](http://www.uniprot.org/citations/23974653), PubMed: [23981774](http://www.uniprot.org/citations/23981774))

target="\_blank">23981774</a>). Also involved in the production of hydrogen sulfide, a gasotransmitter with signaling and cytoprotective effects on neurons (By similarity).

#### Cellular Location

Cytoplasm. Nucleus

#### Tissue Location

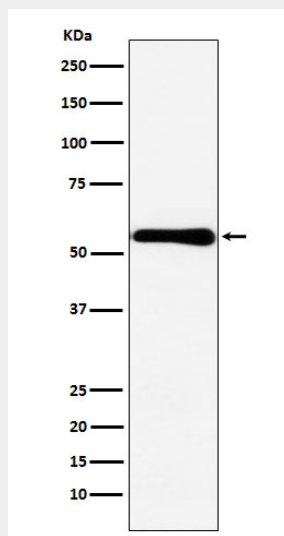
In the adult strongly expressed in liver and pancreas, some expression in heart and brain, weak expression in lung and kidney. In the fetus, expressed in brain, liver and kidney

#### CBS Antibody - Protocols

Provided below are standard protocols that you may find useful for product applications.

- [Western Blot](#)
- [Blocking Peptides](#)
- [Dot Blot](#)
- [Immunohistochemistry](#)
- [Immunofluorescence](#)
- [Immunoprecipitation](#)
- [Flow Cytometry](#)
- [Cell Culture](#)

#### CBS Antibody - Images



Western blot analysis of CBS expression in MCF7 cell lysate.