

CD27 Antibody
Rabbit mAb
Catalog # AP92015

Specification

CD27 Antibody - Product Information

| | |
|--|------------------------|
| Application | WB, FC, ICC |
| Primary Accession | P26842 |
| Reactivity | Rat |
| Clonality | Monoclonal |
| Other Names | |
| CD27; CD27L receptor; LPFS2; S152; T14; TNFRSF7; TNFSF7; Tp55; | |
| Isotype | Rabbit IgG |
| Host | Rabbit |
| Calculated MW | 29137 Da |

CD27 Antibody - Additional Information

| | |
|------------------------------|--|
| Purification | Affinity-chromatography |
| Immunogen | A synthesized peptide derived from human CD27 |
| Description | Receptor for CD70/CD27L. May play a role in survival of activated T-cells. May play a role in apoptosis through association with SIVA1. |
| Storage Condition and Buffer | Rabbit IgG in phosphate buffered saline , pH 7.4, 150mM NaCl, 0.02% sodium azide and 50% glycerol. Store at +4°C short term. Store at -20°C long term. Avoid freeze / thaw cycle. |

CD27 Antibody - Protein Information

Name CD27 ([HGNC:11922](#))

Function

Costimulatory immune-checkpoint receptor expressed at the surface of T-cells, NK-cells and B-cells which binds to and is activated by its ligand CD70/CD27L expressed by B-cells (PubMed:[28011863](http://www.uniprot.org/citations/28011863)). The CD70-CD27 signaling pathway mediates antigen-specific T-cell activation and expansion which in turn provides immune surveillance of B-cells (PubMed:[28011863](http://www.uniprot.org/citations/28011863)). Mechanistically, CD70 ligation activates the TRAF2-PTPN6 axis that subsequently inhibits LCK phosphorylation to promote phenotypic and transcriptional adaptations of T-cell memory (PubMed:[38354704](http://www.uniprot.org/citations/38354704)). In addition, activation by CD70 on early progenitor cells provides a negative feedback signal to leukocyte differentiation during immune activation and thus modulates hematopoiesis (By similarity). Negatively regulates the function of Th2 lymphocytes in the adipose tissue (By

similarity).

Cellular Location

Cell membrane; Single-pass type I membrane protein

Tissue Location

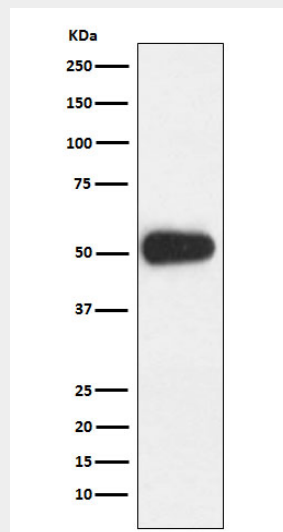
Found in most T-lymphocytes.

CD27 Antibody - Protocols

Provided below are standard protocols that you may find useful for product applications.

- [Western Blot](#)
- [Blocking Peptides](#)
- [Dot Blot](#)
- [Immunohistochemistry](#)
- [Immunofluorescence](#)
- [Immunoprecipitation](#)
- [Flow Cytometry](#)
- [Cell Culture](#)

CD27 Antibody - Images



Western blot analysis of CD27 expression in Ramos cell lysate.