

PRKAR1A Antibody
Rabbit mAb
Catalog # AP92012**Specification**

PRKAR1A Antibody - Product Information

Application	WB, IHC, ICC
Primary Accession	P10644
Reactivity	Rat
Clonality	Monoclonal
Other Names	
PRKAR1A; CAR; CNC; CNC1; PKR1; PPNAD1; PRKAR1; TSE1;	
Isotype	Rabbit IgG
Host	Rabbit
Calculated MW	42982 Da

PRKAR1A Antibody - Additional Information

Purification	Affinity-chromatography
Immunogen	A synthesized peptide derived from human PRKAR1A
Description	Regulatory subunit of the cAMP-dependent protein kinases involved in cAMP signaling in cells.
Storage Condition and Buffer	Rabbit IgG in phosphate buffered saline , pH 7.4, 150mM NaCl, 0.02% sodium azide and 50% glycerol. Store at +4°C short term. Store at -20°C long term. Avoid freeze / thaw cycle.

PRKAR1A Antibody - Protein Information**Name** PRKAR1A**Synonyms** PKR1, PRKAR1, TSE1**Function**

Regulatory subunit of the cAMP-dependent protein kinases involved in cAMP signaling in cells.

Cellular Location

Cell membrane.

Tissue Location

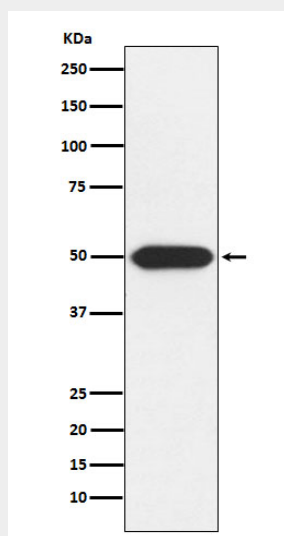
Four types of regulatory chains are found: I-alpha, I-beta, II-alpha, and II-beta. Their expression varies among tissues and is in some cases constitutive and in others inducible

PRKAR1A Antibody - Protocols

Provided below are standard protocols that you may find useful for product applications.

- [Western Blot](#)
- [Blocking Peptides](#)
- [Dot Blot](#)
- [Immunohistochemistry](#)
- [Immunofluorescence](#)
- [Immunoprecipitation](#)
- [Flow Cytometry](#)
- [Cell Culture](#)

PRKAR1A Antibody - Images



Western blot analysis of Protein Kinase A regulatory subunit I alpha expression in U-87MG cell lysate.