

**GSTO1 Antibody**  
Rabbit mAb  
Catalog # AP92008

## Specification

---

### GSTO1 Antibody - Product Information

Application	WB, IHC, ICC
Primary Accession	<a href="#">P78417</a>
Reactivity	Rat
Clonality	Monoclonal
<b>Other Names</b>	
GSTO1 1; Gsto1; GSTTLp28; GSTX; Gtsttl; p28; SPG-R;	
Isotype	Rabbit IgG
Host	Rabbit
Calculated MW	27566 Da

### GSTO1 Antibody - Additional Information

Purification	Affinity-chromatography
Immunogen	A synthesized peptide derived from human GSTO1
Description	Exhibits glutathione-dependent thiol transferase and dehydroascorbate reductase activities. Has S-(phenacyl)glutathione reductase activity. Has also glutathione S-transferase activity.
Storage Condition and Buffer	Rabbit IgG in phosphate buffered saline , pH 7.4, 150mM NaCl, 0.02% sodium azide and 50% glycerol. Store at +4°C short term. Store at -20°C long term. Avoid freeze / thaw cycle.

### GSTO1 Antibody - Protein Information

**Name** GSTO1

**Synonyms** GSTTLP28

#### Function

Exhibits glutathione-dependent thiol transferase and dehydroascorbate reductase activities. Has S-(phenacyl)glutathione reductase activity. Has also glutathione S-transferase activity. Participates in the biotransformation of inorganic arsenic and reduces monomethylarsonic acid (MMA) and dimethylarsonic acid.

#### Cellular Location

Cytoplasm, cytosol.

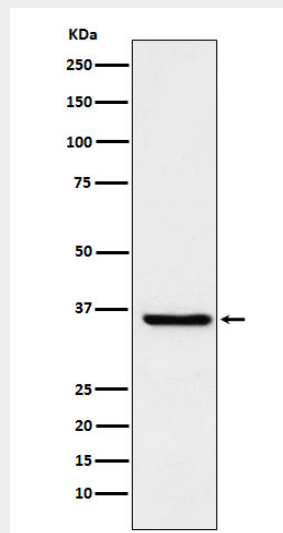
**Tissue Location**

Ubiquitous. Highest expression in liver, pancreas, skeletal muscle, spleen, thymus, colon, blood leukocyte and heart. Lowest expression in brain, placenta and lung.

**GSTO1 Antibody - Protocols**

Provided below are standard protocols that you may find useful for product applications.

- [Western Blot](#)
- [Blocking Peptides](#)
- [Dot Blot](#)
- [Immunohistochemistry](#)
- [Immunofluorescence](#)
- [Immunoprecipitation](#)
- [Flow Cytometry](#)
- [Cell Culture](#)

**GSTO1 Antibody - Images**

Western blot analysis of glutathione S transferase Omega 1 expression in HepG2 cell lysate.