

IMPDH2 Antibody
Rabbit mAb
Catalog # AP92007

Specification

IMPDH2 Antibody - Product Information

Application	WB, IHC, FC, ICC, IP
Primary Accession	P12268
Reactivity	Rat
Clonality	Monoclonal
Other Names	
IMPD2; IMPDH 2; IMPDH II; Impdh2;	
Isotype	Rabbit IgG
Host	Rabbit
Calculated MW	55805 Da

IMPDH2 Antibody - Additional Information

Purification	Affinity-chromatography
Immunogen	A synthesized peptide derived from human IMPDH2
Description	Rate limiting enzyme in the de novo synthesis of guanine nucleotides and therefore is involved in the regulation of cell growth. It may also have a role in the development of malignancy and the growth progression of some tumors.
Storage Condition and Buffer	Rabbit IgG in phosphate buffered saline , pH 7.4, 150mM NaCl, 0.02% sodium azide and 50% glycerol. Store at +4°C short term. Store at -20°C long term. Avoid freeze / thaw cycle.

IMPDH2 Antibody - Protein Information

Name IMPDH2 ([HGNC:6053](#))

Synonyms IMPD2

Function

Catalyzes the conversion of inosine 5'-phosphate (IMP) to xanthosine 5'-phosphate (XMP), the first committed and rate-limiting step in the de novo synthesis of guanine nucleotides, and therefore plays an important role in the regulation of cell growth (PubMed: [7763314](http://www.uniprot.org/citations/7763314), PubMed: [7903306](http://www.uniprot.org/citations/7903306)). Could also have a single-stranded nucleic acid-binding activity and could play a role in RNA and/or DNA metabolism (PubMed: [14766016](http://www.uniprot.org/citations/14766016)). It may also have a role in the development of malignancy and the growth progression of some

tumors.

Cellular Location

Cytoplasm. Nucleus. Cytoplasm, cytosol. Note=Can form fiber-like subcellular structures termed 'cytoophidia' in response to intracellular guanine- nucleotide depletion.

Tissue Location

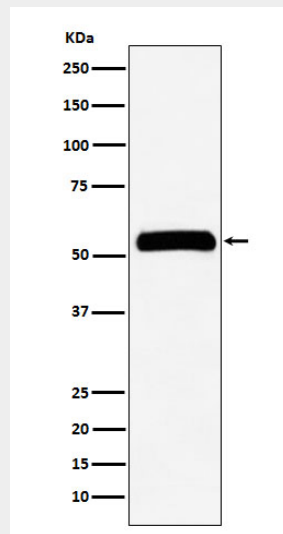
IMPDH1 is the main species in normal leukocytes and IMPDH2 predominates over IMPDH1 in the tumor

IMPDH2 Antibody - Protocols

Provided below are standard protocols that you may find useful for product applications.

- [Western Blot](#)
- [Blocking Peptides](#)
- [Dot Blot](#)
- [Immunohistochemistry](#)
- [Immunofluorescence](#)
- [Immunoprecipitation](#)
- [Flow Cytometry](#)
- [Cell Culture](#)

IMPDH2 Antibody - Images



Western blot analysis of IMPDH2 expression in HeLa cell lysate.