

**TSH beta Antibody**  
**Rabbit mAb**  
**Catalog # AP92001**

## Specification

---

### TSH beta Antibody - Product Information

Application	<b>WB, IHC</b>
Primary Accession	<a href="#">P01222</a>
Clonality	<b>Monoclonal</b>
<b>Other Names</b>	
CHNG4; TSHB;	
Isotype	<b>Rabbit IgG</b>
Host	<b>Rabbit</b>
Calculated MW	<b>15639 Da</b>

### TSH beta Antibody - Additional Information

Purification	<b>Affinity-chromatography</b>
Immunogen	<b>A synthesized peptide derived from human TSH beta</b>
Description	<b>Various hormones are secreted from the anterior pituitary during development and growth. Thyroid Stimulating Hormone (TSH) is secreted from the anterior pituitary and controls thyroid structure and metabolism</b>
Storage Condition and Buffer	<b>Rabbit IgG in phosphate buffered saline , pH 7.4, 150mM NaCl, 0.02% sodium azide and 50% glycerol. Store at +4°C short term. Store at -20°C long term. Avoid freeze / thaw cycle.</b>

### TSH beta Antibody - Protein Information

**Name** TSHB

**Function**

Indispensable for the control of thyroid structure and metabolism.

**Cellular Location**

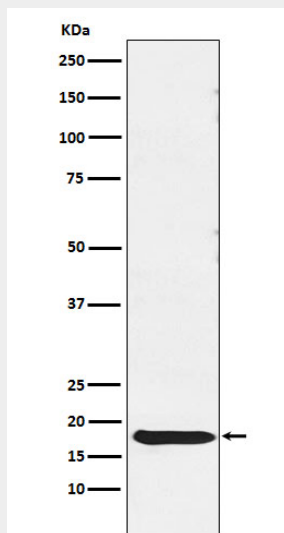
Secreted.

### TSH beta Antibody - Protocols

Provided below are standard protocols that you may find useful for product applications.

- [Western Blot](#)
- [Blocking Peptides](#)
- [Dot Blot](#)
- [Immunohistochemistry](#)
- [Immunofluorescence](#)
- [Immunoprecipitation](#)
- [Flow Cytometry](#)
- [Cell Culture](#)

### TSH beta Antibody - Images



Western blot analysis of TSH beta expression in Human pituitary lysate.