

**PGAM1 Antibody**  
Rabbit mAb  
Catalog # AP91998

## Specification

---

### PGAM1 Antibody - Product Information

Application	WB, FC
Primary Accession	<a href="#">P18669</a>
Reactivity	Rat
Clonality	Monoclonal
<b>Other Names</b>	
PGAM1; PGAMA; PGAMB;	
Isotype	Rabbit IgG
Host	Rabbit
Calculated MW	28804 Da

### PGAM1 Antibody - Additional Information

Purification	Affinity-chromatography
Immunogen	A synthesized peptide derived from human PGAM1
Description	Interconversion of 3- and 2-phosphoglycerate with 2,3-bisphosphoglycerate as the primer of the reaction. Can also catalyze the reaction of EC 5.4.2.4 (synthase) and EC 3.1.3.13 (phosphatase), but with a reduced activity. Rabbit IgG in phosphate buffered saline , pH 7.4, 150mM NaCl, 0.02% sodium azide and 50% glycerol. Store at +4°C short term. Store at -20°C long term. Avoid freeze / thaw cycle.
Storage Condition and Buffer	

### PGAM1 Antibody - Protein Information

**Name** PGAM1 ([HGNC:8888](#))

**Synonyms** PGAMA

#### Function

Catalyzes the interconversion of 2-phosphoglycerate and 3- phosphoglycerate a crucial step in glycolysis, by using 2,3- bisphosphoglycerate (PubMed: [23653202](http://www.uniprot.org/citations/23653202)). Also catalyzes the interconversion of (2R)-2,3-bisphosphoglycerate and (2R)-3-phospho- glyceroyl phosphate (PubMed: [23653202](http://www.uniprot.org/citations/23653202)).

#### Tissue Location

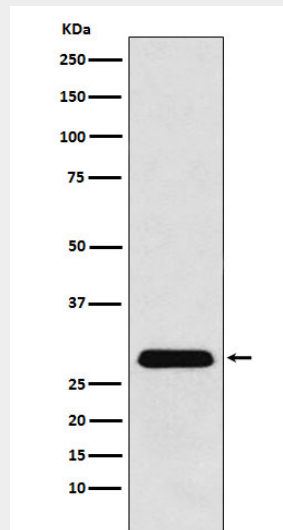
Expressed in the liver and brain. Not found in the muscle.

### PGAM1 Antibody - Protocols

Provided below are standard protocols that you may find useful for product applications.

- [Western Blot](#)
- [Blocking Peptides](#)
- [Dot Blot](#)
- [Immunohistochemistry](#)
- [Immunofluorescence](#)
- [Immunoprecipitation](#)
- [Flow Cytometry](#)
- [Cell Culture](#)

### PGAM1 Antibody - Images



Western blot analysis of PGAM1 expression in A431 cell lysate.