

LysRS Antibody
Rabbit mAb
Catalog # AP91995

Specification

LysRS Antibody - Product Information

Application	WB, IHC, ICC, IP
Primary Accession	Q15046
Reactivity	Rat
Clonality	Monoclonal
Other Names	
CMTRIB; KARS; KARS1; KARS2; KRS; Lysine tRNA ligase; LysRS;	
Isotype	Rabbit IgG
Host	Rabbit
Calculated MW	68048 Da

LysRS Antibody - Additional Information

Purification	Affinity-chromatography
Immunogen	A synthesized peptide derived from human LysRS
Description	Catalyzes the specific attachment of an amino acid to its cognate tRNA in a 2 step reaction: the amino acid (AA) is first activated by ATP to form AA-AMP and then transferred to the acceptor end of the tRNA.
Storage Condition and Buffer	Rabbit IgG in phosphate buffered saline , pH 7.4, 150mM NaCl, 0.02% sodium azide and 50% glycerol. Store at +4°C short term. Store at -20°C long term. Avoid freeze / thaw cycle.

LysRS Antibody - Protein Information

Name KARS1 ([HGNC:6215](#))

Synonyms KARS, KIAA0070

Function

Catalyzes the specific attachment of an amino acid to its cognate tRNA in a 2 step reaction: the amino acid (AA) is first activated by ATP to form AA-AMP and then transferred to the acceptor end of the tRNA (PubMed: [18029264](http://www.uniprot.org/citations/18029264), PubMed: [18272479](http://www.uniprot.org/citations/18272479), PubMed: [9278442](http://www.uniprot.org/citations/9278442)). When secreted, acts as a signaling molecule that induces immune response through the activation of monocyte/macrophages (PubMed: [15851690](http://www.uniprot.org/citations/15851690)). Catalyzes

the synthesis of the signaling molecule diadenosine tetraphosphate (Ap4A), and thereby mediates disruption of the complex between HINT1 and MITF and the concomitant activation of MITF transcriptional activity (PubMed:14975237, PubMed:19524539, PubMed:23159739, PubMed:5338216).

Cellular Location

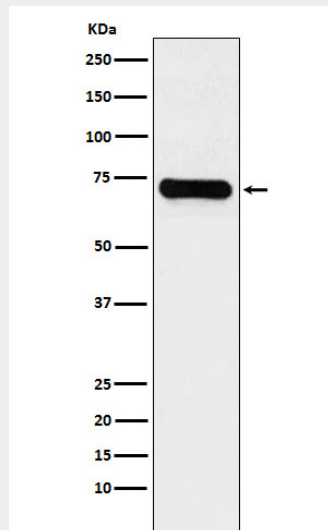
[Isoform Cytoplasmic]: Cytoplasm, cytosol. Cytoplasm. Nucleus. Cell membrane; Peripheral membrane protein. Secreted Note=Secretion is induced by TNF-alpha (PubMed:15851690). Cytosolic in quiescent mast cells. Translocates into the nucleus in response to mast cell activation by immunoglobulin E (PubMed:23159739)

LysRS Antibody - Protocols

Provided below are standard protocols that you may find useful for product applications.

- [Western Blot](#)
- [Blocking Peptides](#)
- [Dot Blot](#)
- [Immunohistochemistry](#)
- [Immunofluorescence](#)
- [Immunoprecipitation](#)
- [Flow Cytometry](#)
- [Cell Culture](#)

LysRS Antibody - Images



Western blot analysis of LysRS expression in Jurkat cell lysate.