

VAMP1 Antibody
Rabbit mAb
Catalog # AP91975

Specification

VAMP1 Antibody - Product Information

Application	WB, IHC, ICC
Primary Accession	P23763
Reactivity	Rat
Clonality	Monoclonal
Other Names	
SYB1; Synaptobrevin 1; Vamp1;	
Isotype	Rabbit IgG
Host	Rabbit
Calculated MW	12902 Da

VAMP1 Antibody - Additional Information

Purification	Affinity-chromatography
Immunogen	A synthesized peptide derived from human VAMP1
Description	Involved in the targeting and/or fusion of transport vesicles to their target membrane.
Storage Condition and Buffer	Rabbit IgG in phosphate buffered saline , pH 7.4, 150mM NaCl, 0.02% sodium azide and 50% glycerol. Store at +4°C short term. Store at -20°C long term. Avoid freeze / thaw cycle.

VAMP1 Antibody - Protein Information

Name VAMP1

Synonyms SYB1

Function

Involved in the targeting and/or fusion of transport vesicles to their target membrane.

Cellular Location

[Isoform 1]: Cytoplasmic vesicle, secretory vesicle, synaptic vesicle membrane; Single-pass type IV membrane protein. Synapse, synaptosome [Isoform 3]: Mitochondrion outer membrane; Single-pass type IV membrane protein

Tissue Location

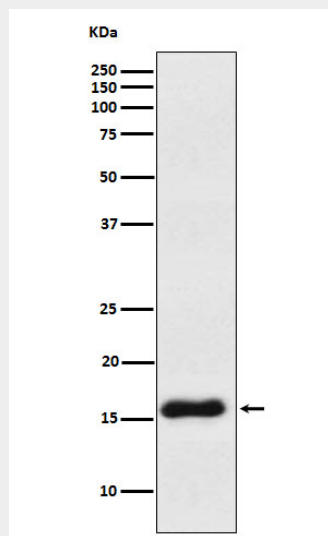
Nervous system, skeletal muscle and adipose tissue.

VAMP1 Antibody - Protocols

Provided below are standard protocols that you may find useful for product applications.

- [Western Blot](#)
- [Blocking Peptides](#)
- [Dot Blot](#)
- [Immunohistochemistry](#)
- [Immunofluorescence](#)
- [Immunoprecipitation](#)
- [Flow Cytometry](#)
- [Cell Culture](#)

VAMP1 Antibody - Images



Western blot analysis of VAMP1 expression in Human cerebellum lysate.