

SLC9A1 Antibody
Rabbit mAb
Catalog # AP91964**Specification**

SLC9A1 Antibody - Product Information

Application	WB
Primary Accession	P19634
Clonality	Monoclonal
Other Names	
APNH; APNH1; NHE1; SLC9A1;	
Isotype	Rabbit IgG
Host	Rabbit
Calculated MW	90763 Da

SLC9A1 Antibody - Additional Information

Purification	Affinity-chromatography
Immunogen	A synthesized peptide derived from human Sodium / Hydrogen Exchanger 1
Description	Involved in pH regulation to eliminate acids generated by active metabolism or to counter adverse environmental conditions. Major proton extruding system driven by the inward sodium ion chemical gradient. Plays an important role in signal transduction.
Storage Condition and Buffer	Rabbit IgG in phosphate buffered saline , pH 7.4, 150mM NaCl, 0.02% sodium azide and 50% glycerol. Store at +4°C short term. Store at -20°C long term. Avoid freeze / thaw cycle.

SLC9A1 Antibody - Protein Information**Name** SLC9A1 ([HGNC:11071](#))**Function**

Electroneutral Na(+) /H(+) antiporter that extrudes Na(+) in exchange for external protons driven by the inward sodium ion chemical gradient, protecting cells from acidification that occurs from metabolism (PubMed: [11350981](http://www.uniprot.org/citations/11350981), PubMed: [11532004](http://www.uniprot.org/citations/11532004), PubMed: [14680478](http://www.uniprot.org/citations/14680478), PubMed: [15035633](http://www.uniprot.org/citations/15035633), PubMed: [15677483](http://www.uniprot.org/citations/15677483), PubMed: [17073455](http://www.uniprot.org/citations/17073455), PubMed: [17493937](http://www.uniprot.org/citations/17493937), PubMed: [22020933](http://www.uniprot.org/citations/22020933))

target="_blank">22020933, PubMed:27650500, PubMed:32130622, PubMed:7110335, PubMed:7603840). Exchanges intracellular H(+) ions for extracellular Na(+) in 1:1 stoichiometry (By similarity). Plays a key role in maintaining intracellular pH neutral and cell volume, and thus is important for cell growth, proliferation, migration and survival (PubMed:12947095, PubMed:15096511, PubMed:22020933, PubMed:8901634). In addition, can transport lithium Li(+) and functions also as a Na(+)/Li(+) antiporter (PubMed:7603840). SLC9A1 also functions in membrane anchoring and organization of scaffolding complexes that coordinate signaling inputs (PubMed:15096511).

Cellular Location

Cell membrane; Multi-pass membrane protein. Basolateral cell membrane {ECO:0000250|UniProtKB:P48762}; Multi-pass membrane protein. Note=Localized basolaterally in every epithelial cell, except in the choroid plexus where SLC9A1 is expressed luminally.

Tissue Location

Kidney and intestine.

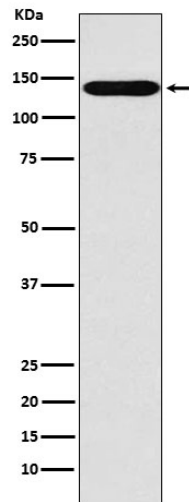
SLC9A1 Antibody - Protocols

Provided below are standard protocols that you may find useful for product applications.

- [Western Blot](#)
- [Blocking Peptides](#)
- [Dot Blot](#)
- [Immunohistochemistry](#)
- [Immunofluorescence](#)
- [Immunoprecipitation](#)
- [Flow Cytometry](#)
- [Cell Culture](#)

SLC9A1 Antibody - Images





Western blot analysis of Sodium / Hydrogen Exchanger 1 expression in MOLT4 cell lysate.