

**CtBP1 Antibody**  
Rabbit mAb  
Catalog # AP91956

## Specification

---

### CtBP1 Antibody - Product Information

Application	WB, IHC, FC, ICC, IP
Primary Accession	<a href="#">Q13363</a>
Reactivity	Rat
Clonality	Monoclonal
<b>Other Names</b>	
BARS; CTBP; CtBP1;	
Isotype	Rabbit IgG
Host	Rabbit
Calculated MW	47535 Da

### CtBP1 Antibody - Additional Information

Purification	Affinity-chromatography
Immunogen	A synthesized peptide derived from human CtBP1
Description	Involved in controlling the equilibrium between tubular and stacked structures in the Golgi complex. Functions in brown adipose tissue (BAT) differentiation. Corepressor targeting diverse transcription regulators such as GLIS2. Has dehydrogenase activity.
Storage Condition and Buffer	Rabbit IgG in phosphate buffered saline , pH 7.4, 150mM NaCl, 0.02% sodium azide and 50% glycerol. Store at +4°C short term. Store at -20°C long term. Avoid freeze / thaw cycle.

### CtBP1 Antibody - Protein Information

**Name** CTBP1

**Synonyms** CTBP

#### Function

Corepressor targeting diverse transcription regulators such as GLIS2 or BCL6. Has dehydrogenase activity. Involved in controlling the equilibrium between tubular and stacked structures in the Golgi complex. Functions in brown adipose tissue (BAT) differentiation.

#### Cellular Location

Cytoplasm. Nucleus

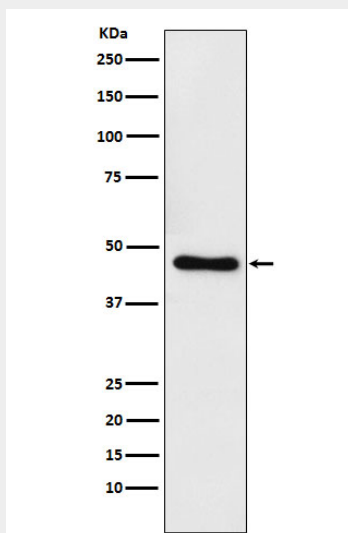
**Tissue Location**

Expressed in germinal center B-cells.

**CtBP1 Antibody - Protocols**

Provided below are standard protocols that you may find useful for product applications.

- [Western Blot](#)
- [Blocking Peptides](#)
- [Dot Blot](#)
- [Immunohistochemistry](#)
- [Immunofluorescence](#)
- [Immunoprecipitation](#)
- [Flow Cytometry](#)
- [Cell Culture](#)

**CtBP1 Antibody - Images**

Western blot analysis of CtBP1 expression in Raji cell lysate.