

Desmoglein 2 Antibody
Rabbit mAb
Catalog # AP91954

Specification

Desmoglein 2 Antibody - Product Information

Application	WB, IHC, FC, ICC
Primary Accession	Q14126
Reactivity	Rat
Clonality	Monoclonal
Other Names	
desmoglein-2; DSG2; HDGC; ARVD10; CDHF5; CMD1BB;	
Isotype	Rabbit IgG
Host	Rabbit
Calculated MW	122294 Da

Desmoglein 2 Antibody - Additional Information

Purification	Affinity-chromatography
Immunogen	A synthesized peptide derived from human Desmoglein 2
Description	Component of intercellular desmosome junctions. Involved in the interaction of plaque proteins and intermediate filaments mediating cell-cell adhesion.
Storage Condition and Buffer	Rabbit IgG in phosphate buffered saline , pH 7.4, 150mM NaCl, 0.02% sodium azide and 50% glycerol. Store at +4°C short term. Store at -20°C long term. Avoid freeze / thaw cycle.

Desmoglein 2 Antibody - Protein Information

Name DSG2

Synonyms CDHF5

Function

Component of intercellular desmosome junctions. Involved in the interaction of plaque proteins and intermediate filaments mediating cell-cell adhesion.

Cellular Location

Cell membrane; Single-pass type I membrane protein. Cell junction, desmosome

Tissue Location

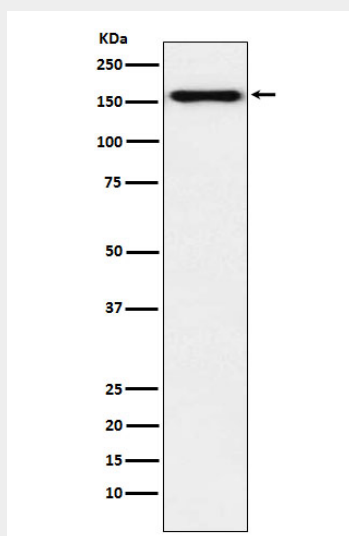
All of the tissues tested and carcinomas.

Desmoglein 2 Antibody - Protocols

Provided below are standard protocols that you may find useful for product applications.

- [Western Blot](#)
- [Blocking Peptides](#)
- [Dot Blot](#)
- [Immunohistochemistry](#)
- [Immunofluorescence](#)
- [Immunoprecipitation](#)
- [Flow Cytometry](#)
- [Cell Culture](#)

Desmoglein 2 Antibody - Images



Western blot analysis of Desmoglein 2 expression in HeLa cell lysate.