

FKBP51 Antibody
Rabbit mAb
Catalog # AP91950

Specification

FKBP51 Antibody - Product Information

Application	WB, IHC, FC, ICC, IP
Primary Accession	O13451
Reactivity	Rat
Clonality	Monoclonal
Other Names	
AIG6; FKBP5; FKBP51; FKBP54; P54; PPlase; PPlase FKBP5; Ptg10;Rotamase;	
Isotype	Rabbit IgG
Host	Rabbit
Calculated MW	51212 Da

FKBP51 Antibody - Additional Information

Purification	Affinity-chromatography
Immunogen	A synthesized peptide derived from human FKBP51
Description	Interacts with functionally mature heterooligomeric progesterone receptor complexes along with HSP90 and TEBP.
Storage Condition and Buffer	Rabbit IgG in phosphate buffered saline , pH 7.4, 150mM NaCl, 0.02% sodium azide and 50% glycerol. Store at +4°C short term. Store at -20°C long term. Avoid freeze / thaw cycle.

FKBP51 Antibody - Protein Information

Name FKBP5

Synonyms AIG6, FKBP51 {ECO:0000303|PubMed:2814727}

Function

Immunophilin protein with PPlase and co-chaperone activities (PubMed:[11350175](http://www.uniprot.org/citations/11350175)). Component of unligated steroid receptors heterocomplexes through interaction with heat-shock protein 90 (HSP90). Plays a role in the intracellular trafficking of heterooligomeric forms of steroid hormone receptors maintaining the complex into the cytoplasm when unliganded (PubMed:[12538866](http://www.uniprot.org/citations/12538866)). Acts as a regulator of Akt/AKT1 activity by promoting the interaction between Akt/AKT1 and PHLPP1, thereby enhancing dephosphorylation and subsequent activation of Akt/AKT1 (PubMed:[28147277](http://www.uniprot.org/citations/28147277)), PubMed:[28363942](http://www.uniprot.org/citations/28363942)). Interacts with IKBKE and IKBKB which facilitates IKK complex assembly leading to increased IKBKE and

IKBKB kinase activity, NF-kappa-B activation, and IFN production (PubMed:26101251, PubMed:31434731).

Cellular Location

Cytoplasm {ECO:0000250|UniProtKB:Q64378}. Nucleus {ECO:0000250|UniProtKB:Q64378}

Tissue Location

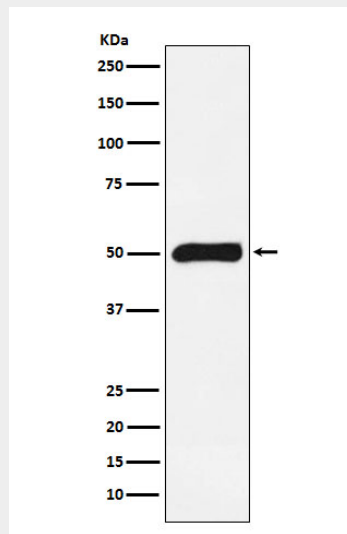
Widely expressed, enriched in testis compared to other tissues

FKBP51 Antibody - Protocols

Provided below are standard protocols that you may find useful for product applications.

- [Western Blot](#)
- [Blocking Peptides](#)
- [Dot Blot](#)
- [Immunohistochemistry](#)
- [Immunofluorescence](#)
- [Immunoprecipitation](#)
- [Flow Cytometry](#)
- [Cell Culture](#)

FKBP51 Antibody - Images



Western blot analysis of FKBP51 expression in Caco-2 cell lysate.