

MC1 Receptor Antibody
Rabbit mAb
Catalog # AP91944**Specification**

MC1 Receptor Antibody - Product Information

Application	WB, IHC
Primary Accession	Q01726
Clonality	Monoclonal
Other Names	
CMM5; MC1R; MSHR; SHEP2;	
Isotype	Rabbit IgG
Host	Rabbit
Calculated MW	34706 Da

MC1 Receptor Antibody - Additional Information

Purification	Affinity-chromatography
Immunogen	A synthesized peptide derived from human MC1 Receptor
Description	Receptor for MSH (alpha, beta and gamma) and ACTH. The activity of this receptor is mediated by G proteins which activate adenylate cyclase.
Storage Condition and Buffer	Rabbit IgG in phosphate buffered saline , pH 7.4, 150mM NaCl, 0.02% sodium azide and 50% glycerol. Store at +4°C short term. Store at -20°C long term. Avoid freeze / thaw cycle.

MC1 Receptor Antibody - Protein Information**Name** MC1R**Synonyms** MSHR**Function**

Receptor for MSH (alpha, beta and gamma) and ACTH (PubMed: [11442765](http://www.uniprot.org/citations/11442765), PubMed: [11707265](http://www.uniprot.org/citations/11707265), PubMed: [1325670](http://www.uniprot.org/citations/1325670), PubMed: [1516719](http://www.uniprot.org/citations/1516719), PubMed: [8463333](http://www.uniprot.org/citations/8463333)). The activity of this receptor is mediated by G proteins which activate adenylate cyclase (PubMed: [11707265](http://www.uniprot.org/citations/11707265), PubMed: [1325670](http://www.uniprot.org/citations/1325670), PubMed: [16463023](http://www.uniprot.org/citations/16463023), PubMed: [19737927](http://www.uniprot.org/citations/19737927)). Mediates

melanogenesis, the production of eumelanin (black/brown) and pheomelanin (red/yellow), via regulation of cAMP signaling in melanocytes (PubMed:31097585).

Cellular Location

Cell membrane; Multi-pass membrane protein

Tissue Location

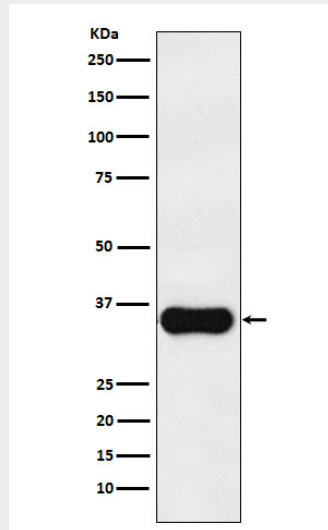
Expressed in melanocytes (PubMed:1325670, PubMed:31097585). Expressed in corticoadrenal tissue (PubMed:1325670)

MC1 Receptor Antibody - Protocols

Provided below are standard protocols that you may find useful for product applications.

- [Western Blot](#)
- [Blocking Peptides](#)
- [Dot Blot](#)
- [Immunohistochemistry](#)
- [Immunofluorescence](#)
- [Immunoprecipitation](#)
- [Flow Cytometry](#)
- [Cell Culture](#)

MC1 Receptor Antibody - Images



Western blot analysis of MC1 Receptor expression in A375 cell lysate.