

ATOH1 Antibody
Rabbit mAb
Catalog # AP91940**Specification**

ATOH1 Antibody - Product Information

| | |
|-------------------------------------|------------------------|
| Application | WB |
| Primary Accession | O92858 |
| Reactivity | Rat |
| Clonality | Monoclonal |
| Other Names | |
| ATH1; ATOH1; bHLHa14; hATH1; MATH1; | |
| Isotype | Rabbit IgG |
| Host | Rabbit |
| Calculated MW | 38160 Da |

ATOH1 Antibody - Additional Information

| | |
|------------------------------|---|
| Purification | Affinity-chromatography |
| Immunogen | A synthesized peptide derived from human MATH1/HATH1 |
| Description | Activates E box-dependent transcription in collaboration with TCF3/E47, but the activity is completely antagonized by the negative regulator of neurogenesis HES1. May play a role in the differentiation of subsets of neural cells by activating E box-dependent transcription. |
| Storage Condition and Buffer | Rabbit IgG in phosphate buffered saline , pH 7.4, 150mM NaCl, 0.02% sodium azide and 50% glycerol. Store at +4°C short term. Store at -20°C long term. Avoid freeze / thaw cycle. |

ATOH1 Antibody - Protein Information**Name** ATOH1 ([HGNC:797](#))**Synonyms** ATH1, BHLHA14**Function**

Transcriptional regulator. Activates E box-dependent transcription in collaboration with TCF3/E47, but the activity is completely antagonized by the negative regulator of neurogenesis HES1. Plays a role in the differentiation of subsets of neural cells by activating E box-dependent transcription (By similarity).

Cellular Location

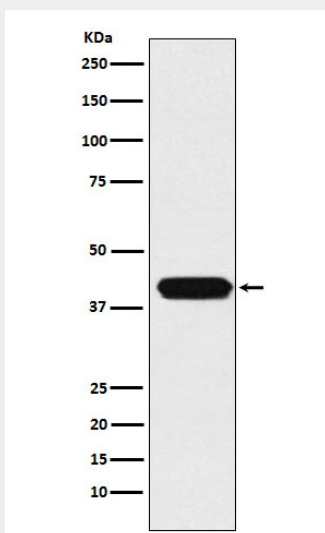
Nucleus.

ATOH1 Antibody - Protocols

Provided below are standard protocols that you may find useful for product applications.

- [Western Blot](#)
- [Blocking Peptides](#)
- [Dot Blot](#)
- [Immunohistochemistry](#)
- [Immunofluorescence](#)
- [Immunoprecipitation](#)
- [Flow Cytometry](#)
- [Cell Culture](#)

ATOH1 Antibody - Images



Western blot analysis of MATH1/HATH1 expression in HepG2 cell lysate.