

CBFb Antibody
Rabbit mAb
Catalog # AP91938

Specification

CBFb Antibody - Product Information

Application	WB, IHC, FC, ICC
Primary Accession	Q13951
Reactivity	Rat
Clonality	Monoclonal

Other Names

CBFB; CBFbeta; PEA2; PEA2 beta; PEA2beta; PEBP2 beta; PEBP2B;

Isotype	Rabbit IgG
Host	Rabbit
Calculated MW	21508 Da

CBFb Antibody - Additional Information

Purification	Affinity-chromatography
Immunogen	A synthesized peptide derived from human CBFb
Description	CBF binds to the core site, 5'-PYGPGGT-3', of a number of enhancers and promoters, including murine leukemia virus, polyomavirus enhancer, T-cell receptor enhancers, LCK, IL3 and GM-CSF promoters. CBFB enhances DNA binding by RUNX1.
Storage Condition and Buffer	Rabbit IgG in phosphate buffered saline , pH 7.4, 150mM NaCl, 0.02% sodium azide and 50% glycerol. Store at +4°C short term. Store at -20°C long term. Avoid freeze / thaw cycle.

CBFb Antibody - Protein Information

Name CBFB

Function

Forms the heterodimeric complex core-binding factor (CBF) with RUNX family proteins (RUNX1, RUNX2, and RUNX3). RUNX members modulate the transcription of their target genes through recognizing the core consensus binding sequence 5'-TGTGGT-3', or very rarely, 5'- TGCGGT-3', within their regulatory regions via their runt domain, while CBFB is a non-DNA-binding regulatory subunit that allosterically enhances the sequence-specific DNA-binding capacity of RUNX. The heterodimers bind to the core site of a number of enhancers and promoters, including murine leukemia virus, polyomavirus enhancer, T- cell receptor enhancers, LCK, IL3 and GM-CSF promoters. CBF complexes repress ZBTB7B transcription factor during cytotoxic (CD8+) T cell development. They bind to RUNX-binding sequence within the ZBTB7B locus acting as

transcriptional silencer and allowing for cytotoxic T cell differentiation.

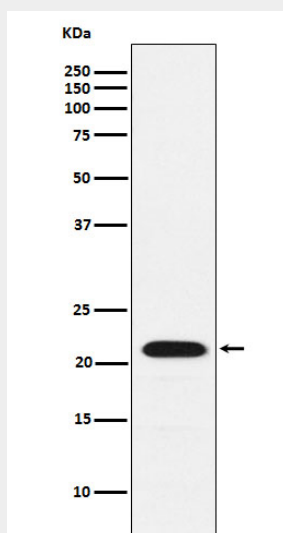
Cellular Location

Nucleus {ECO:0000250|UniProtKB:Q08024}.

CBFb Antibody - Protocols

Provided below are standard protocols that you may find useful for product applications.

- [Western Blot](#)
- [Blocking Peptides](#)
- [Dot Blot](#)
- [Immunohistochemistry](#)
- [Immunofluorescence](#)
- [Immunoprecipitation](#)
- [Flow Cytometry](#)
- [Cell Culture](#)

CBFb Antibody - Images

Western blot analysis of CBFb expression in K562 cell lysate.