

Napsin A Antibody
Rabbit mAb
Catalog # AP91936

Specification

Napsin A Antibody - Product Information

Application	WB, IHC, IP
Primary Accession	O96009
Clonality	Monoclonal
Other Names	
ASP4; KAP; Kdap; NAP1; NAPA; Napsa; Napsin-1; Napsin-A; Pronapsin A; SNAPA; TA01/TA02;	
Isotype	Rabbit IgG
Host	Rabbit
Calculated MW	45387 Da

Napsin A Antibody - Additional Information

Purification	Affinity-chromatography
Immunogen	A synthesized peptide derived from human NAPSIN A
Description	May be involved in processing of pneumocyte surfactant precursors.
Storage Condition and Buffer	Rabbit IgG in phosphate buffered saline , pH 7.4, 150mM NaCl, 0.02% sodium azide and 50% glycerol. Store at +4°C short term. Store at -20°C long term. Avoid freeze / thaw cycle.

Napsin A Antibody - Protein Information

Name NAPSA

Synonyms NAP1, NAPA

Function

May be involved in processing of pneumocyte surfactant precursors.

Cellular Location

Secreted.

Tissue Location

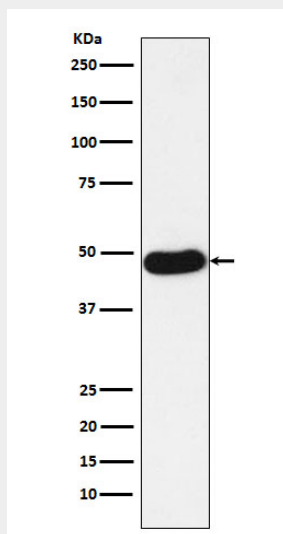
Expressed predominantly in adult lung (type II pneumocytes) and kidney and in fetal lung. Low levels in adult spleen and very low levels in peripheral blood leukocytes

Napsin A Antibody - Protocols

Provided below are standard protocols that you may find useful for product applications.

- [Western Blot](#)
- [Blocking Peptides](#)
- [Dot Blot](#)
- [Immunohistochemistry](#)
- [Immunofluorescence](#)
- [Immunoprecipitation](#)
- [Flow Cytometry](#)
- [Cell Culture](#)

Napsin A Antibody - Images



Western blot analysis of NAPSIN A expression in Human lung adenocarcinoma lysate.