

MST1 Antibody
Rabbit mAb
Catalog # AP91935

Specification

MST1 Antibody - Product Information

Application	WB, IHC, FC
Primary Accession	P26927
Reactivity	Rat
Clonality	Monoclonal
Other Names	
HGFL; MSP; MST1; NF15S2;	
Isotype	Rabbit IgG
Host	Rabbit
Calculated MW	80320 Da

MST1 Antibody - Additional Information

Purification	Affinity-chromatography
Immunogen	A synthesized peptide derived from human MST1
Description	Probably has no proteolytic activity, since crucial characteristic of serine proteases catalytic sites are not conserved.
Storage Condition and Buffer	Rabbit IgG in phosphate buffered saline , pH 7.4, 150mM NaCl, 0.02% sodium azide and 50% glycerol. Store at +4°C short term. Store at -20°C long term. Avoid freeze / thaw cycle.

MST1 Antibody - Protein Information

Name MST1

Synonyms D3F15S2, DNF15S2, HGFL

Cellular Location
Secreted.

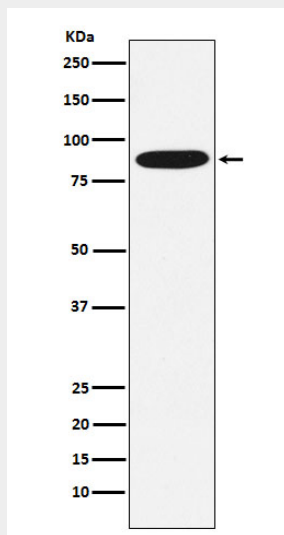
MST1 Antibody - Protocols

Provided below are standard protocols that you may find useful for product applications.

- [Western Blot](#)
- [Blocking Peptides](#)
- [Dot Blot](#)

- [Immunohistochemistry](#)
- [Immunofluorescence](#)
- [Immunoprecipitation](#)
- [Flow Cytometry](#)
- [Cell Culture](#)

MST1 Antibody - Images



Western blot analysis of MST1 expression in HepG2 cell lysate.