

ORP150 Antibody
Rabbit mAb
Catalog # AP91929

Specification

ORP150 Antibody - Product Information

Application	WB, IHC, FC
Primary Accession	O9Y4L1
Reactivity	Rat
Clonality	Monoclonal
Other Names	
Grp170; HSP12A; Hyou1; Orp150;	
Isotype	Rabbit IgG
Host	Rabbit
Calculated MW	111335 Da

ORP150 Antibody - Additional Information

Purification	Affinity-chromatography
Immunogen	A synthesized peptide derived from human ORP150
Description	Has a pivotal role in cytoprotective cellular mechanisms triggered by oxygen deprivation. May play a role as a molecular chaperone and participate in protein folding.
Storage Condition and Buffer	Rabbit IgG in phosphate buffered saline , pH 7.4, 150mM NaCl, 0.02% sodium azide and 50% glycerol. Store at +4°C short term. Store at -20°C long term. Avoid freeze / thaw cycle.

ORP150 Antibody - Protein Information

Name HYOU1

Synonyms GRP170, HSPH4 {ECO:0000303|PubMed:186636}

Function

Has a pivotal role in cytoprotective cellular mechanisms triggered by oxygen deprivation. May play a role as a molecular chaperone and participate in protein folding.

Cellular Location

Endoplasmic reticulum lumen.

Tissue Location

Highly expressed in tissues that contain well- developed endoplasmic reticulum and synthesize large amounts of secretory proteins. Highly expressed in liver and pancreas and lower expression

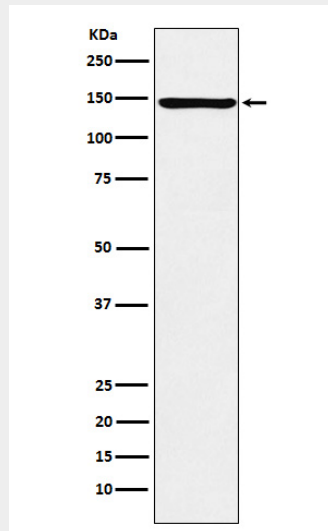
in brain and kidney. Also expressed in macrophages within aortic atherosclerotic plaques, and in breast cancers

ORP150 Antibody - Protocols

Provided below are standard protocols that you may find useful for product applications.

- [Western Blot](#)
- [Blocking Peptides](#)
- [Dot Blot](#)
- [Immunohistochemistry](#)
- [Immunofluorescence](#)
- [Immunoprecipitation](#)
- [Flow Cytometry](#)
- [Cell Culture](#)

ORP150 Antibody - Images



Western blot analysis of ORP150 expression in MCF7 cell lysate.