

**IL23 Antibody**  
**Rabbit mAb**  
**Catalog # AP91926****Specification**

---

**IL23 Antibody - Product Information**

Application	WB
Primary Accession	<a href="#">Q9NPF7</a>
Clonality	Monoclonal
<b>Other Names</b>	
IL 23A; IL 23p19; IL12B; IL23; IL23a; IL23P19; P19; SGRF;	
Isotype	Rabbit IgG
Host	Rabbit
Calculated MW	20730 Da

**IL23 Antibody - Additional Information**

Purification	Affinity-chromatography
Immunogen	A synthesized peptide derived from human IL23
Description	Associates with IL12B to form the IL-23 interleukin, an heterodimeric cytokine which functions in innate and adaptive immunity. IL-23 may constitute with IL-17 an acute response to infection in peripheral tissues. IL-23 binds to an heterodimeric receptor complex composed of IL12RB1 and IL23R, activates the Jak-Stat signaling cascade, stimulates memory rather than naive T-cells and promotes production of proinflammatory cytokines.
Storage Condition and Buffer	Rabbit IgG in phosphate buffered saline , pH 7.4, 150mM NaCl, 0.02% sodium azide and 50% glycerol. Store at +4°C short term. Store at -20°C long term. Avoid freeze / thaw cycle.

**IL23 Antibody - Protein Information****Name** IL23A**Synonyms** SGRF**Function**

Associates with IL12B to form the pro-inflammatory cytokine IL-23 that plays different roles in innate and adaptive immunity (PubMed:<a href="http://www.uniprot.org/citations/11114383" target="\_blank">11114383</a>). Released by antigen-presenting cells such as dendritic cells or

macrophages, binds to a heterodimeric receptor complex composed of IL12RB1 and IL23R to activate JAK2 and TYK2 which then phosphorylate the receptor to form a docking site leading to the phosphorylation of STAT3 and STAT4 (PubMed:<a href="http://www.uniprot.org/citations/29287995" target="\_blank">29287995</a>, PubMed:<a href="http://www.uniprot.org/citations/32474165" target="\_blank">32474165</a>, PubMed:<a href="http://www.uniprot.org/citations/33606986" target="\_blank">33606986</a>). This process leads to activation of several pathways including p38 MAPK or NF-kappa-B and promotes the production of pro- inflammatory cytokines such as interleukin-17A/IL17A (PubMed:<a href="http://www.uniprot.org/citations/12023369" target="\_blank">12023369</a>). In turn, participates in the early and effective intracellular bacterial clearance (PubMed:<a href="http://www.uniprot.org/citations/32474165" target="\_blank">32474165</a>). Promotes the expansion and survival of T-helper 17 cells, a CD4-positive helper T-cell subset that produces IL-17, as well as other IL-17-producing cells (PubMed:<a href="http://www.uniprot.org/citations/17676044" target="\_blank">17676044</a>).

### Cellular Location

Secreted. Note=Secreted upon association with IL12B

### Tissue Location

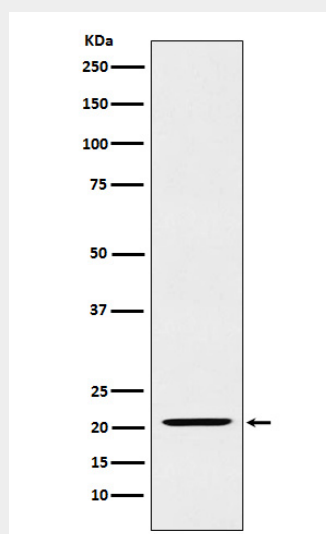
Secreted by activated dendritic and phagocytic cells and keratinocytes. Also expressed by dermal Langerhans cells (at protein level).

## IL23 Antibody - Protocols

Provided below are standard protocols that you may find useful for product applications.

- [Western Blot](#)
- [Blocking Peptides](#)
- [Dot Blot](#)
- [Immunohistochemistry](#)
- [Immunofluorescence](#)
- [Immunoprecipitation](#)
- [Flow Cytometry](#)
- [Cell Culture](#)

## IL23 Antibody - Images



Western blot analysis of IL23 expression in Raji cell lysate.