

Netrin 1 Antibody
Rabbit mAb
Catalog # AP91921

Specification

Netrin 1 Antibody - Product Information

Application	WB, ICC
Primary Accession	O95631
Reactivity	Rat
Clonality	Monoclonal
Other Names	
Netrin1; NTN1; NTN1L; Unc6;	
Isotype	Rabbit IgG
Host	Rabbit
Calculated MW	67748 Da

Netrin 1 Antibody - Additional Information

Purification	Affinity-chromatography
Immunogen	A synthesized peptide derived from human Netrin 1
Description	Netrins control guidance of CNS commissural axons and peripheral motor axons. Its association with either DCC or some UNC5 receptors will lead to axon attraction or repulsion, respectively.
Storage Condition and Buffer	Rabbit IgG in phosphate buffered saline , pH 7.4, 150mM NaCl, 0.02% sodium azide and 50% glycerol. Store at +4°C short term. Store at -20°C long term. Avoid freeze / thaw cycle.

Netrin 1 Antibody - Protein Information

Name NTN1

Synonyms NTN1L

Function

Netrins control guidance of CNS commissural axons and peripheral motor axons. Its association with either DCC or some UNC5 receptors will lead to axon attraction or repulsion, respectively. Binding to UNC5C might cause dissociation of UNC5C from polymerized TUBB3 in microtubules and thereby lead to increased microtubule dynamics and axon repulsion (PubMed:[28483977](http://www.uniprot.org/citations/28483977)). Involved in dorsal root ganglion axon projection towards the spinal cord (PubMed:[28483977](http://www.uniprot.org/citations/28483977)). It also serves as a survival factor via its association with its receptors which prevent the initiation of apoptosis. Involved in tumorigenesis by regulating apoptosis (PubMed:[28483977](http://www.uniprot.org/citations/28483977)).

href="http://www.uniprot.org/citations/15343335" target="_blank">15343335).

Cellular Location

Secreted. Cytoplasm. Note=Mainly secreted

Tissue Location

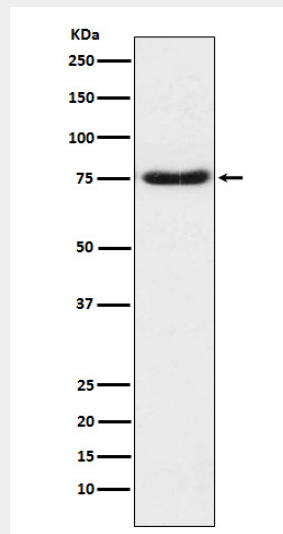
Widely expressed in normal adult tissues with highest levels in heart, small intestine, colon, liver and prostate Reduced expression in brain tumors and neuroblastomas. Expressed in epididymis (at protein level).

Netrin 1 Antibody - Protocols

Provided below are standard protocols that you may find useful for product applications.

- [Western Blot](#)
- [Blocking Peptides](#)
- [Dot Blot](#)
- [Immunohistochemistry](#)
- [Immunofluorescence](#)
- [Immunoprecipitation](#)
- [Flow Cytometry](#)
- [Cell Culture](#)

Netrin 1 Antibody - Images



Western blot analysis of Netrin 1 expression in Human fetal brain lysate.