

Galectin 8 Antibody
Rabbit mAb
Catalog # AP91905**Specification**

Galectin 8 Antibody - Product Information

Application	WB, IHC, FC, ICC, IP
Primary Accession	O00214
Clonality	Monoclonal
Other Names	
LGALS8; Galectin-8g; Galectin-8; Po66-CBP; PCTA-1; Gal-8; Galectin 8; PCTA1;	
Isotype	Rabbit IgG
Host	Rabbit
Calculated MW	35808 Da

Galectin 8 Antibody - Additional Information

Purification	Affinity-chromatography
Immunogen	A synthesized peptide derived from human Galectin 8
Description	Beta-galactoside-binding lectin that acts as a sensor of membrane damage caused by infection and restricts the proliferation of infecting pathogens by targeting them for autophagy.
Storage Condition and Buffer	Rabbit IgG in phosphate buffered saline , pH 7.4, 150mM NaCl, 0.02% sodium azide and 50% glycerol. Store at +4°C short term. Store at -20°C long term. Avoid freeze / thaw cycle.

Galectin 8 Antibody - Protein Information**Name** LGALS8 ([HGNC:6569](#))**Function**

Beta-galactoside-binding lectin that acts as a sensor of membrane damage caused by infection and restricts the proliferation of infecting pathogens by targeting them for autophagy (PubMed:[22246324](http://www.uniprot.org/citations/22246324)), PubMed:[28077878](http://www.uniprot.org/citations/28077878)). Detects membrane rupture by binding beta-galactoside ligands located on the luminal side of the endosome membrane; these ligands becoming exposed to the cytoplasm following rupture (PubMed:[22246324](http://www.uniprot.org/citations/22246324)), PubMed:[28077878](http://www.uniprot.org/citations/28077878)). Restricts infection by initiating autophagy via interaction with CALCOCO2/NDP52 (PubMed:[22246324](http://www.uniprot.org/citations/22246324)), PubMed:[28077878](http://www.uniprot.org/citations/28077878)). Required to restrict infection of bacterial invasion such as *S.typhimurium* (PubMed:

[22246324](http://www.uniprot.org/citations/22246324)). Also required to restrict infection of Picornaviridae viruses (PubMed:[28077878](http://www.uniprot.org/citations/28077878)). Has a marked preference for 3'-O-sialylated and 3'-O-sulfated glycans (PubMed:[21288902](http://www.uniprot.org/citations/21288902)).

Cellular Location

Cytoplasmic vesicle. Cytoplasm, cytosol

Tissue Location

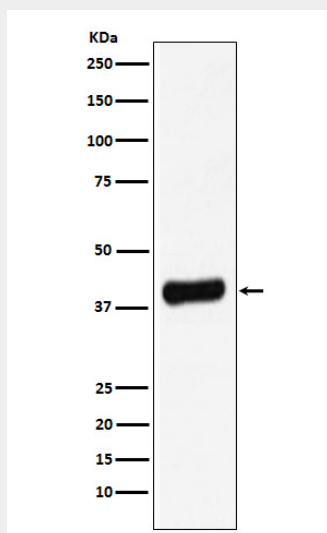
Ubiquitous. Selective expression by prostate carcinomas versus normal prostate and benign prostatic hypertrophy

Galectin 8 Antibody - Protocols

Provided below are standard protocols that you may find useful for product applications.

- [Western Blot](#)
- [Blocking Peptides](#)
- [Dot Blot](#)
- [Immunohistochemistry](#)
- [Immunofluorescence](#)
- [Immunoprecipitation](#)
- [Flow Cytometry](#)
- [Cell Culture](#)

Galectin 8 Antibody - Images



Western blot analysis of Galectin 8 expression in LNCaP cell lysate.