

Cdx1 Antibody
Rabbit mAb
Catalog # AP91904

Specification

Cdx1 Antibody - Product Information

Application	WB, ICC
Primary Accession	P47902
Clonality	Monoclonal
Other Names	
CDX1; Homeobox protein CDX 1;	
Isotype	Rabbit IgG
Host	Rabbit
Calculated MW	28138 Da

Cdx1 Antibody - Additional Information

Purification	Affinity-chromatography
Immunogen	A synthesized peptide derived from human Cdx1
Description	Could play a role in the terminal differentiation of the intestine.
Storage Condition and Buffer	Rabbit IgG in phosphate buffered saline , pH 7.4, 150mM NaCl, 0.02% sodium azide and 50% glycerol. Store at +4°C short term. Store at -20°C long term. Avoid freeze / thaw cycle.

Cdx1 Antibody - Protein Information

Name CDX1

Function

Plays a role in transcriptional regulation (PubMed:24623306). Involved in activated KRAS-mediated transcriptional activation of PRKD1 in colorectal cancer (CRC) cells (PubMed:24623306). Binds to the PRKD1 promoter in colorectal cancer (CRC) cells (PubMed:24623306). Could play a role in the terminal differentiation of the intestine. Binds preferentially to methylated DNA (PubMed:28473536).

Cellular Location

Nucleus.

Tissue Location

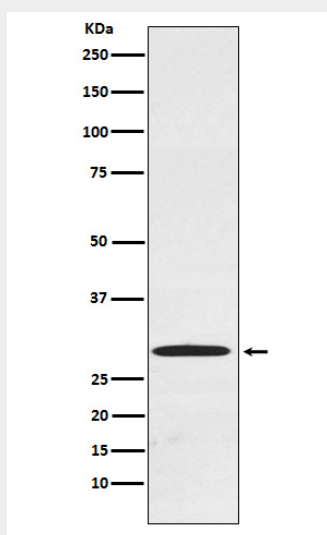
Intestinal epithelium.

Cdx1 Antibody - Protocols

Provided below are standard protocols that you may find useful for product applications.

- [Western Blot](#)
- [Blocking Peptides](#)
- [Dot Blot](#)
- [Immunohistochemistry](#)
- [Immunofluorescence](#)
- [Immunoprecipitation](#)
- [Flow Cytometry](#)
- [Cell Culture](#)

Cdx1 Antibody - Images



Western blot analysis of Cdx1 expression in Caco-2 cell lysate.