

CD89 Antibody
Rabbit mAb
Catalog # AP91901

Specification

CD89 Antibody - Product Information

Application	WB, IHC, FC, ICC, IP
Primary Accession	P24071
Clonality	Monoclonal
Other Names	
CD89; Fc alpha receptor; FCAR; IgA Fc receptor;	
Isotype	Rabbit IgG
Host	Rabbit
Calculated MW	32265 Da

CD89 Antibody - Additional Information

Purification	Affinity-chromatography
Immunogen	A synthesized peptide derived from human CD89
Description	Binds to the Fc region of immunoglobulins alpha. Mediates several functions including cytokine production.
Storage Condition and Buffer	Rabbit IgG in phosphate buffered saline , pH 7.4, 150mM NaCl, 0.02% sodium azide and 50% glycerol. Store at +4°C short term. Store at -20°C long term. Avoid freeze / thaw cycle.

CD89 Antibody - Protein Information

Name FCAR

Synonyms CD89

Function

Binds to the Fc region of immunoglobulins alpha. Mediates several functions including cytokine production.

Cellular Location

[Isoform A.1]: Cell membrane; Single-pass type I membrane protein [Isoform A.3]: Cell membrane; Single-pass type I membrane protein [Isoform B-delta-S2]: Secreted.

Tissue Location

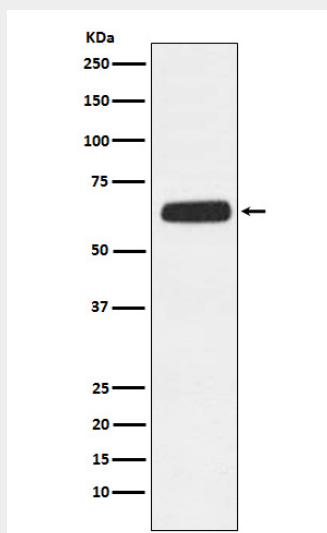
Isoform A.1, isoform A.2 and isoform A.3 are differentially expressed between blood and mucosal myeloid cells Isoform A.1, isoform A.2 and isoform A.3 are expressed in monocytes Isoform A.1 and isoform A.2 are expressed in alveolar macrophages; however only one isoform is expressed at alveolar macrophages surfaces

CD89 Antibody - Protocols

Provided below are standard protocols that you may find useful for product applications.

- [Western Blot](#)
- [Blocking Peptides](#)
- [Dot Blot](#)
- [Immunohistochemistry](#)
- [Immunofluorescence](#)
- [Immunoprecipitation](#)
- [Flow Cytometry](#)
- [Cell Culture](#)

CD89 Antibody - Images



Western blot analysis of CD89 expression in HL-60 cell lysate.