

**Plastin L Antibody**  
**Rabbit mAb**  
**Catalog # AP91887**

## Specification

---

### Plastin L Antibody - Product Information

Application	WB, IHC, ICC
Primary Accession	<a href="#">P13796</a>
Reactivity	Rat
Clonality	Monoclonal
<b>Other Names</b>	
CP64; L plastin; LC64P; LCP1; LPL; Lplastin; Plastin 2; PLS2;	
Isotype	Rabbit IgG
Host	Rabbit
Calculated MW	70288 Da

### Plastin L Antibody - Additional Information

Purification	<b>Affinity-chromatography</b>
Immunogen	<b>A synthesized peptide derived from human Plastin L</b>
Description	<b>Actin-binding protein. Plays a role in the activation of T-cells in response to costimulation through TCR/CD3 and CD2 or CD28. Modulates the cell surface expression of IL2RA/CD25 and CD69.</b>
Storage Condition and Buffer	<b>Rabbit IgG in phosphate buffered saline , pH 7.4, 150mM NaCl, 0.02% sodium azide and 50% glycerol. Store at +4°C short term. Store at -20°C long term. Avoid freeze / thaw cycle.</b>

### Plastin L Antibody - Protein Information

**Name** LCP1

**Synonyms** PLS2

#### Function

Actin-binding protein (PubMed: [16636079](http://www.uniprot.org/citations/16636079), PubMed: [17294403](http://www.uniprot.org/citations/17294403), PubMed: [28493397](http://www.uniprot.org/citations/28493397)). Plays a role in the activation of T-cells in response to costimulation through TCR/CD3 and CD2 or CD28 (PubMed: [17294403](http://www.uniprot.org/citations/17294403)). Modulates the cell surface expression of IL2RA/CD25 and CD69 (PubMed: [17294403](http://www.uniprot.org/citations/17294403)).

### Cellular Location

Cytoplasm, cytoskeleton. Cell junction. Cell projection. Cell projection, ruffle membrane {ECO:0000250|UniProtKB:Q61233, ECO:0000269|PubMed:16636079}; Peripheral membrane protein {ECO:0000250|UniProtKB:Q61233}; Cytoplasmic side {ECO:0000250|UniProtKB:Q61233}. Note=Relocalizes to the immunological synapse between peripheral blood T-lymphocytes and antibody-presenting cells in response to costimulation through TCR/CD3 and CD2 or CD28 (PubMed:17294403). Associated with the actin cytoskeleton at membrane ruffles. Relocalizes to actin-rich cell projections upon serine phosphorylation (PubMed:16636079). {ECO:0000250|UniProtKB:Q61233, ECO:0000269|PubMed:16636079, ECO:0000269|PubMed:17294403}

### Tissue Location

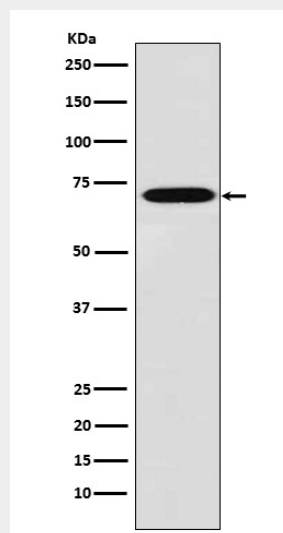
Detected in intestinal microvilli, hair cell stereocilia, and fibroblast filopodia, in spleen and other lymph node- containing organs. Expressed in peripheral blood T-lymphocytes, neutrophils, monocytes, B-lymphocytes, and myeloid cells

### Plastin L Antibody - Protocols

Provided below are standard protocols that you may find useful for product applications.

- [Western Blot](#)
- [Blocking Peptides](#)
- [Dot Blot](#)
- [Immunohistochemistry](#)
- [Immunofluorescence](#)
- [Immunoprecipitation](#)
- [Flow Cytometry](#)
- [Cell Culture](#)

### Plastin L Antibody - Images



Western blot analysis of Plastin L expression in THP1 cell lysate.