

OS9 Antibody
Rabbit mAb
Catalog # AP91885

Specification

OS9 Antibody - Product Information

Application	WB, IHC, ICC, IP
Primary Accession	Q13438
Reactivity	Rat
Clonality	Monoclonal
Other Names	
ERLEC2; Os9;	
Isotype	Rabbit IgG
Host	Rabbit
Calculated MW	75562 Da

OS9 Antibody - Additional Information

Purification	Affinity-chromatography
Immunogen	A synthesized peptide derived from human OS9
Description	Lectin which functions in endoplasmic reticulum (ER) quality control and ER-associated degradation (ERAD).
Storage Condition and Buffer	Rabbit IgG in phosphate buffered saline , pH 7.4, 150mM NaCl, 0.02% sodium azide and 50% glycerol. Store at +4°C short term. Store at -20°C long term. Avoid freeze / thaw cycle.

OS9 Antibody - Protein Information

Name OS9

Function

Lectin which functions in endoplasmic reticulum (ER) quality control and ER-associated degradation (ERAD). May bind terminally misfolded non-glycosylated proteins as well as improperly folded glycoproteins, retain them in the ER, and possibly transfer them to the ubiquitination machinery and promote their degradation. Possible targets include TRPV4.

Cellular Location

Endoplasmic reticulum lumen

Tissue Location

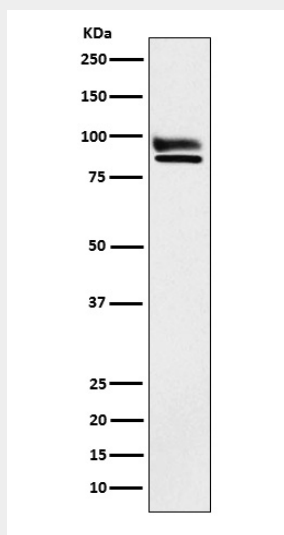
Ubiquitously expressed. Found as well in all tumor cell lines analyzed, amplified in sarcomas. Highly expressed in osteosarcoma SJSA-1 and rhabdomyosarcoma Rh30 cell lines. Isoform 2 is the major isoform detected in all cell types examined

OS9 Antibody - Protocols

Provided below are standard protocols that you may find useful for product applications.

- [Western Blot](#)
- [Blocking Peptides](#)
- [Dot Blot](#)
- [Immunohistochemistry](#)
- [Immunofluorescence](#)
- [Immunoprecipitation](#)
- [Flow Cytometry](#)
- [Cell Culture](#)

OS9 Antibody - Images



Western blot analysis of OS9 expression in HeLa cell lysate.