

Nucleostemin Antibody
Rabbit mAb
Catalog # AP91874

Specification

Nucleostemin Antibody - Product Information

Application **WB, FC, ICC**
Primary Accession [Q9BVP2](#)
Clonality **Monoclonal**
Other Names
E2IG3; GNL3; NNP47; NS; Nucleostemin;

Isotype **Rabbit IgG**
Host **Rabbit**
Calculated MW **61993 Da**

Nucleostemin Antibody - Additional Information

Purification **Affinity-chromatography**
Immunogen **A synthesized peptide derived from human Nucleostemin**
Description **May be required to maintain the proliferative capacity of stem cells and may play an important role in tumorigenesis.**
Storage Condition and Buffer **Rabbit IgG in phosphate buffered saline , pH 7.4, 150mM NaCl, 0.02% sodium azide and 50% glycerol. Store at +4°C short term. Store at -20°C long term. Avoid freeze / thaw cycle.**

Nucleostemin Antibody - Protein Information

Name GNL3

Synonyms E2IG3, NS

Function

May be required to maintain the proliferative capacity of stem cells. Stabilizes MDM2 by preventing its ubiquitination, and hence proteasomal degradation (By similarity).

Cellular Location

Nucleus {ECO:0000250|UniProtKB:Q811S9}. Nucleus, nucleolus. Note=Shuttles between the nucleus and nucleolus. {ECO:0000250|UniProtKB:Q811S9}

Tissue Location

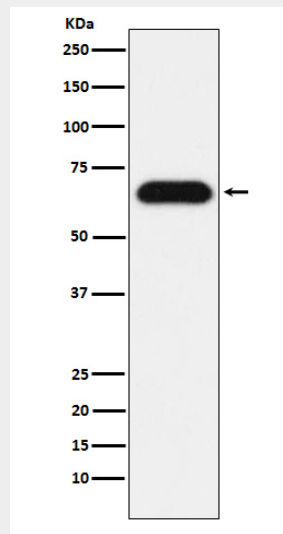
Increased levels in lung tissue in cancer patients.

Nucleostemin Antibody - Protocols

Provided below are standard protocols that you may find useful for product applications.

- [Western Blot](#)
- [Blocking Peptides](#)
- [Dot Blot](#)
- [Immunohistochemistry](#)
- [Immunofluorescence](#)
- [Immunoprecipitation](#)
- [Flow Cytometry](#)
- [Cell Culture](#)

Nucleostemin Antibody - Images



Western blot analysis of Nucleostemin expression in HeLa cell lysate.