

BAP31 Antibody
Rabbit mAb
Catalog # AP91873

Specification

BAP31 Antibody - Product Information

Application	WB, IHC, FC, ICC
Primary Accession	P51572
Clonality	Monoclonal
Other Names	
BCR-associated protein Bap31; p28 Bap31; Protein CDM;	
Isotype	Rabbit IgG
Host	Rabbit
Calculated MW	27992 Da

BAP31 Antibody - Additional Information

Purification	Affinity-chromatography
Immunogen	A synthesized peptide derived from human BAP31
Description	May play a role in anterograde transport of membrane proteins from the endoplasmic reticulum to the Golgi. May be involved in CASP8-mediated apoptosis.
Storage Condition and Buffer	Rabbit IgG in phosphate buffered saline , pH 7.4, 150mM NaCl, 0.02% sodium azide and 50% glycerol. Store at +4°C short term. Store at -20°C long term. Avoid freeze / thaw cycle.

BAP31 Antibody - Protein Information

Name BCAP31 ([HGNC:16695](#))

Function

Functions as a chaperone protein (PubMed: [18287538](http://www.uniprot.org/citations/18287538), PubMed: [9396746](http://www.uniprot.org/citations/9396746)). Is one of the most abundant endoplasmic reticulum (ER) proteins (PubMed: [18287538](http://www.uniprot.org/citations/18287538), PubMed: [9396746](http://www.uniprot.org/citations/9396746)). Plays a role in the export of secreted proteins in the ER, the recognition of abnormally folded protein and their targeting to the ER associated-degradation (ERAD) (PubMed: [18287538](http://www.uniprot.org/citations/18287538), PubMed: [9396746](http://www.uniprot.org/citations/9396746)). Also serves as a cargo receptor for the export of transmembrane proteins (By similarity). Plays a role in the assembly of the mitochondrial membrane respiratory chain NADH dehydrogenase (Complex I) by stimulating the translocation of NDUFS4 and NDUFB11 from the cytosol to the mitochondria via interaction with TOMM40 (PubMed: [31206022](http://www.uniprot.org/citations/31206022))

target="_blank">31206022). In response to ER stress, delocalizes from the ER-mitochondria contact sites and binds BCL2 (PubMed:31206022). May be involved in CASP8-mediated apoptosis (PubMed:10958671).

Cellular Location

Endoplasmic reticulum membrane; Multi-pass membrane protein Endoplasmic reticulum-Golgi intermediate compartment membrane; Multi-pass membrane protein. Note=May shuttle between the ER and the intermediate compartment/cis-Golgi complex (PubMed:9396746). Associates with the mitochondria-associated endoplasmic reticulum membrane via interaction with TOMM40 (PubMed:31206022)

Tissue Location

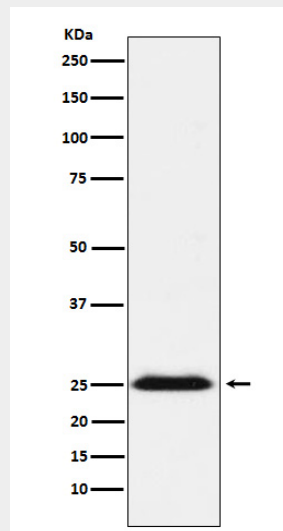
Ubiquitous. Highly expressed in neurons and discrete endocrine cells.

BAP31 Antibody - Protocols

Provided below are standard protocols that you may find useful for product applications.

- [Western Blot](#)
- [Blocking Peptides](#)
- [Dot Blot](#)
- [Immunohistochemistry](#)
- [Immunofluorescence](#)
- [Immunoprecipitation](#)
- [Flow Cytometry](#)
- [Cell Culture](#)

BAP31 Antibody - Images



Western blot analysis of BAP31 expression in NCCIT cell lysate.