

**DEK Antibody (C-term)**  
**Affinity Purified Rabbit Polyclonal Antibody (Pab)**  
**Catalog # AP9186b**

**Specification**

---

**DEK Antibody (C-term) - Product Information**

Application	IF, WB, IHC-P, FC,E
Primary Accession	<a href="#">P35659</a>
Reactivity	Human
Host	Rabbit
Clonality	Polyclonal
Isotype	Rabbit IgG
Antigen Region	336-364

**DEK Antibody (C-term) - Additional Information**

**Gene ID** 7913

**Other Names**

Protein DEK, DEK

**Target/Specificity**

This DEK antibody is generated from rabbits immunized with a KLH conjugated synthetic peptide between 336-364 amino acids from the C-terminal region of human DEK.

**Dilution**

IF~~1:10~50  
WB~~1:1000  
IHC-P~~1:50~100  
FC~~1:10~50

**Format**

Purified polyclonal antibody supplied in PBS with 0.09% (W/V) sodium azide. This antibody is purified through a protein A column, followed by peptide affinity purification.

**Storage**

Maintain refrigerated at 2-8°C for up to 2 weeks. For long term storage store at -20°C in small aliquots to prevent freeze-thaw cycles.

**Precautions**

DEK Antibody (C-term) is for research use only and not for use in diagnostic or therapeutic procedures.

**DEK Antibody (C-term) - Protein Information**

**Name** DEK

**Function** Involved in chromatin organization.

### Cellular Location

Nucleus. Note=Enriched in regions where chromatin is decondensed or sparse in the interphase nuclei

### Tissue Location

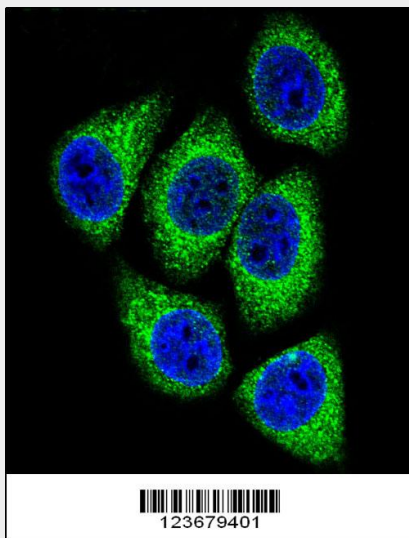
Ubiquitous. Expressed at relatively high levels.

### DEK Antibody (C-term) - Protocols

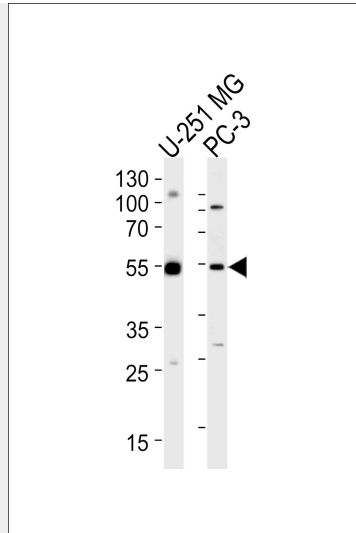
Provided below are standard protocols that you may find useful for product applications.

- [Western Blot](#)
- [Blocking Peptides](#)
- [Dot Blot](#)
- [Immunohistochemistry](#)
- [Immunofluorescence](#)
- [Immunoprecipitation](#)
- [Flow Cytometry](#)
- [Cell Culture](#)

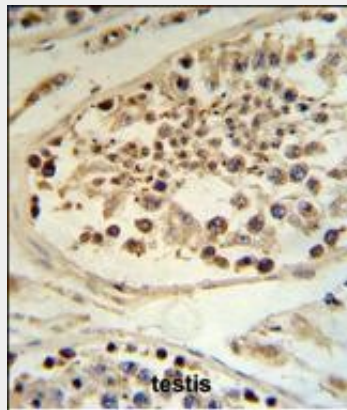
### DEK Antibody (C-term) - Images



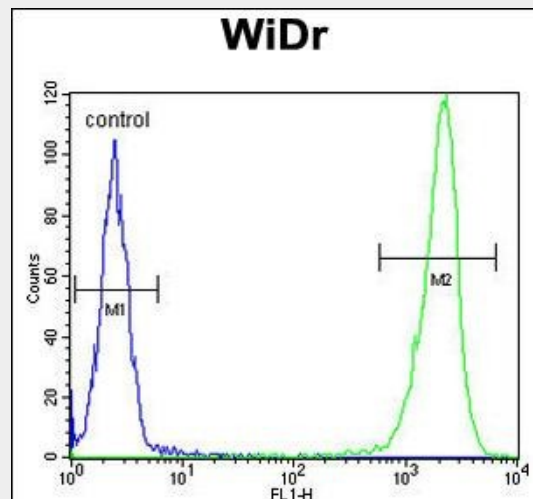
Confocal immunofluorescent analysis of DEK Antibody (C-term) (Cat#AP9186b) with HeLa cell followed by Alexa Fluor 488-conjugated goat anti-rabbit IgG (green). DAPI was used to stain the cell nuclear (blue).



Western blot analysis of lysates from U-251 MG, PC-3 cell line (from left to right), using DEK Antibody (C-term)(Cat. #AP9186b). AP9186b was diluted at 1:1000 at each lane. A goat anti-rabbit IgG H&L(HRP) at 1:5000 dilution was used as the secondary antibody. Lysates at 35ug per lane.



DEK Antibody (C-term) (Cat. #AP9186b) IHC analysis in formalin fixed and paraffin embedded human testis tissue followed by peroxidase conjugation of the secondary antibody and DAB staining. This data demonstrates the use of the DEK Antibody (C-term) for immunohistochemistry. Clinical relevance has not been evaluated.



DEK Antibody (C-term) (Cat. #AP9186b) flow cytometric analysis of WiDr cells (right histogram) compared to a negative control cell (left histogram). FITC-conjugated goat-anti-rabbit secondary antibodies were used for the analysis.

#### **DEK Antibody (C-term) - Background**

DEK is a protein with one SAP domain. This protein binds to cruciform and superhelical DNA and induces positive supercoils into closed circular DNA, and is also involved in splice site selection during mRNA processing. Chromosomal aberrations involving this region, increased expression of this gene, and the presence of antibodies against this protein are all associated with various diseases.

#### **DEK Antibody (C-term) - References**

Sawatsubashi, S., et al., *Genes Dev.* 24 (2), 159-170 (2010)  
Khodadoust, M.S., et al., *Cancer Res.* 69 (16), 6405-6413 (2009)