

**TRF2 Antibody**  
Rabbit mAb  
Catalog # AP91864

## Specification

---

### TRF2 Antibody - Product Information

Application **WB, IHC, ICC**  
Primary Accession [Q15554](#)  
Clonality **Monoclonal**  
**Other Names**  
Terf2; TRBF2; TRF2;

Isotype **Rabbit IgG**  
Host **Rabbit**  
Calculated MW **59594 Da**

### TRF2 Antibody - Additional Information

Purification **Affinity-chromatography**  
Immunogen **A synthesized peptide derived from human TRF2**  
Description **Binds the telomeric double-stranded 5'-TTAGGG-3' repeat and plays a central role in telomere maintenance and protection against end-to-end fusion of chromosomes. In addition to its telomeric DNA-binding role, required to recruit a number of factors and enzymes required for telomere protection, including the shelterin complex, TERF2IP/RAP1 and DCLRE1B/Apollo.**  
Storage Condition and Buffer **Rabbit IgG in phosphate buffered saline , pH 7.4, 150mM NaCl, 0.02% sodium azide and 50% glycerol. Store at +4°C short term. Store at -20°C long term. Avoid freeze / thaw cycle.**

### TRF2 Antibody - Protein Information

**Name** TERF2

**Synonyms** TRBF2, TRF2 {ECO:0000303|PubMed:28216226}

#### **Function**

Binds the telomeric double-stranded 5'-TTAGGG-3' repeat and plays a central role in telomere maintenance and protection against end-to-end fusion of chromosomes (PubMed:<a href="http://www.uniprot.org/citations/15608617" target="\_blank">15608617</a>, PubMed:<a href="http://www.uniprot.org/citations/16166375" target="\_blank">16166375</a>, PubMed:<a href="http://www.uniprot.org/citations/20655466" target="\_blank">20655466</a>, PubMed:<a href="http://www.uniprot.org/citations/20655466" target="\_blank">20655466</a>, PubMed:<a href="http://www.uniprot.org/citations/20655466" target="\_blank">20655466</a>)

[28216226](http://www.uniprot.org/citations/28216226), PubMed: [9326950](http://www.uniprot.org/citations/9326950), PubMed: [9326951](http://www.uniprot.org/citations/9326951), PubMed: [9476899](http://www.uniprot.org/citations/9476899)). In addition to its telomeric DNA-binding role, required to recruit a number of factors and enzymes required for telomere protection, including the shelterin complex, TERF2IP/RAP1 and DCLRE1B/Apollo (PubMed: [16166375](http://www.uniprot.org/citations/16166375), PubMed: [20655466](http://www.uniprot.org/citations/20655466)). Component of the shelterin complex (telosome) that is involved in the regulation of telomere length and protection (PubMed: [16166375](http://www.uniprot.org/citations/16166375)). Shelterin associates with arrays of double-stranded 5'-TTAGGG-3' repeats added by telomerase and protects chromosome ends; without its protective activity, telomeres are no longer hidden from the DNA damage surveillance and chromosome ends are inappropriately processed by DNA repair pathways (PubMed: [16166375](http://www.uniprot.org/citations/16166375)). Together with DCLRE1B/Apollo, plays a key role in telomeric loop (T loop) formation by generating 3' single-stranded overhang at the leading end telomeres: T loops have been proposed to protect chromosome ends from degradation and repair (PubMed: [20655466](http://www.uniprot.org/citations/20655466)). Required both to recruit DCLRE1B/Apollo to telomeres and activate the exonuclease activity of DCLRE1B/Apollo (PubMed: [20655466](http://www.uniprot.org/citations/20655466), PubMed: [28216226](http://www.uniprot.org/citations/28216226)). Preferentially binds to positive supercoiled DNA (PubMed: [15608617](http://www.uniprot.org/citations/15608617), PubMed: [20655466](http://www.uniprot.org/citations/20655466)). Together with DCLRE1B/Apollo, required to control the amount of DNA topoisomerase (TOP1, TOP2A and TOP2B) needed for telomere replication during fork passage and prevent aberrant telomere topology (PubMed: [20655466](http://www.uniprot.org/citations/20655466)). Recruits TERF2IP/RAP1 to telomeres, thereby participating in to repressing homology-directed repair (HDR), which can affect telomere length (By similarity).

### Cellular Location

Nucleus {ECO:0000255|PROSITE-ProRule:PRU00625, ECO:0000269|PubMed:20655466}. Chromosome, telomere. Note=Colocalizes with telomeric DNA in interphase cells and is located at chromosome ends during metaphase

### Tissue Location

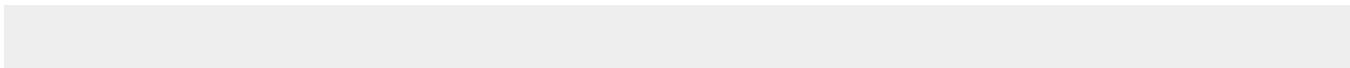
Ubiquitous. Highly expressed in spleen, thymus, prostate, uterus, testis, small intestine, colon and peripheral blood leukocytes.

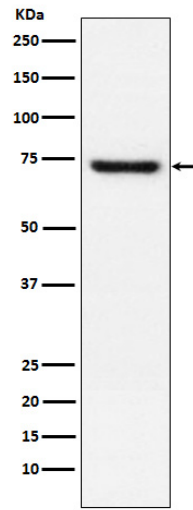
### TRF2 Antibody - Protocols

Provided below are standard protocols that you may find useful for product applications.

- [Western Blot](#)
- [Blocking Peptides](#)
- [Dot Blot](#)
- [Immunohistochemistry](#)
- [Immunofluorescence](#)
- [Immunoprecipitation](#)
- [Flow Cytometry](#)
- [Cell Culture](#)

### TRF2 Antibody - Images





Western blot analysis of TRF2 expression in Jurkat cell lysate.