

**Prolactin Antibody**  
**Rabbit mAb**  
**Catalog # AP91857**

**Specification**

---

**Prolactin Antibody - Product Information**

Application	<b>WB</b>
Primary Accession	<a href="#">P01236</a>
Clonality	<b>Monoclonal</b>
<b>Other Names</b>	
GHA1; Mamotropin; PRL; Prolactin;	
Isotype	<b>Rabbit IgG</b>
Host	<b>Rabbit</b>
Calculated MW	<b>25876 Da</b>

**Prolactin Antibody - Additional Information**

Purification	<b>Affinity-chromatography</b>
Immunogen	<b>A synthesized peptide derived from human Prolactin</b>
Description	<b>Various hormones are secreted from the anterior pituitary during development and growth. Prolactin is a growth factor secreted by the anterior pituitary that is necessary for the proliferation and differentiation of the mammary glands.</b>
Storage Condition and Buffer	<b>Rabbit IgG in phosphate buffered saline , pH 7.4, 150mM NaCl, 0.02% sodium azide and 50% glycerol. Store at +4°C short term. Store at -20°C long term. Avoid freeze / thaw cycle.</b>

**Prolactin Antibody - Protein Information**

**Name** PRL

**Function**

Prolactin acts primarily on the mammary gland by promoting lactation.

**Cellular Location**

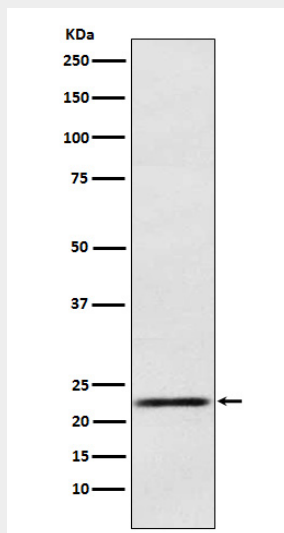
Secreted.

**Prolactin Antibody - Protocols**

Provided below are standard protocols that you may find useful for product applications.

- [Western Blot](#)
- [Blocking Peptides](#)
- [Dot Blot](#)
- [Immunohistochemistry](#)
- [Immunofluorescence](#)
- [Immunoprecipitation](#)
- [Flow Cytometry](#)
- [Cell Culture](#)

### Prolactin Antibody - Images



Western blot analysis of Prolactin expression in Human fetal pituitary lysate.