

Apolipoprotein A II Antibody
Rabbit mAb
Catalog # AP91843**Specification**

Apolipoprotein A II Antibody - Product Information

Application	WB, FC, ICC
Primary Accession	P02652
Reactivity	Rat
Clonality	Monoclonal
Other Names	
APO A2; Apo AII; APOA 2; ApoA II; APOA2; APOAII; Apolipoprotein A II;	
Isotype	Rabbit IgG
Host	Rabbit
Calculated MW	11175 Da

Apolipoprotein A II Antibody - Additional Information

Purification	Affinity-chromatography
Immunogen	A synthesized peptide derived from human Apolipoprotein A II
Description	May stabilize HDL (high density lipoprotein) structure by its association with lipids, and affect the HDL metabolism.
Storage Condition and Buffer	Rabbit IgG in phosphate buffered saline , pH 7.4, 150mM NaCl, 0.02% sodium azide and 50% glycerol. Store at +4°C short term. Store at -20°C long term. Avoid freeze / thaw cycle.

Apolipoprotein A II Antibody - Protein Information**Name** APOA2**Function**

May stabilize HDL (high density lipoprotein) structure by its association with lipids, and affect the HDL metabolism.

Cellular Location

Secreted.

Tissue Location

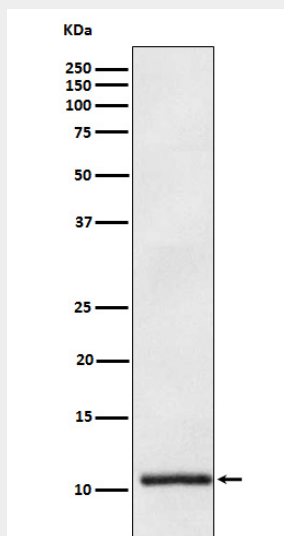
Plasma; synthesized in the liver and intestine.

Apolipoprotein A II Antibody - Protocols

Provided below are standard protocols that you may find useful for product applications.

- [Western Blot](#)
- [Blocking Peptides](#)
- [Dot Blot](#)
- [Immunohistochemistry](#)
- [Immunofluorescence](#)
- [Immunoprecipitation](#)
- [Flow Cytometry](#)
- [Cell Culture](#)

Apolipoprotein A II Antibody - Images



Western blot analysis of Apolipoprotein A II expression in Human plasma lysate.