

**APOL1 Antibody**  
Rabbit mAb  
Catalog # AP91842

## Specification

---

### APOL1 Antibody - Product Information

|                            |                        |
|----------------------------|------------------------|
| Application                | WB, FC, ICC, IP        |
| Primary Accession          | <a href="#">O14791</a> |
| Clonality                  | Monoclonal             |
| <b>Other Names</b>         |                        |
| ApoL; APOL1; APOLI; FSGS4; |                        |
| Isotype                    | Rabbit IgG             |
| Host                       | Rabbit                 |
| Calculated MW              | 43974 Da               |

### APOL1 Antibody - Additional Information

|                              |   |
|------------------------------|---|
| Purification                 | Affinity-chromatography   |
| Immunogen                    | A synthesized peptide derived from human APOL1  |
| Description                  | May play a role in lipid exchange and transport throughout the body. May participate in reverse cholesterol transport from peripheral cells to the liver.                         |
| Storage Condition and Buffer | Rabbit IgG in phosphate buffered saline , pH 7.4, 150mM NaCl, 0.02% sodium azide and 50% glycerol. Store at +4°C short term. Store at -20°C long term. Avoid freeze / thaw cycle. |

### APOL1 Antibody - Protein Information

**Name** APOL1

**Synonyms** APOL

#### Function

May play a role in lipid exchange and transport throughout the body. May participate in reverse cholesterol transport from peripheral cells to the liver.

#### Cellular Location

Secreted.

#### Tissue Location

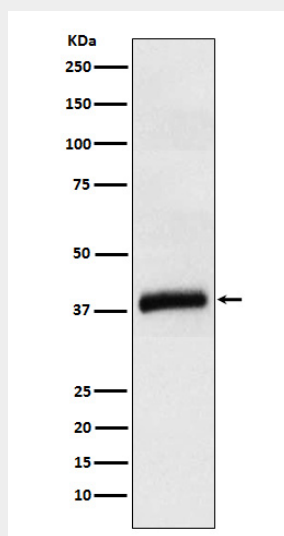
Plasma. Found on APOA-I-containing high density lipoprotein (HDL3). Expressed in pancreas, lung, prostate, liver, placenta and spleen

## APOL1 Antibody - Protocols

Provided below are standard protocols that you may find useful for product applications.

- [Western Blot](#)
- [Blocking Peptides](#)
- [Dot Blot](#)
- [Immunohistochemistry](#)
- [Immunofluorescence](#)
- [Immunoprecipitation](#)
- [Flow Cytometry](#)
- [Cell Culture](#)

## APOL1 Antibody - Images



Western blot analysis of APOL1 expression in Human plasma cell lysate.