

**MIB1 / DIP1 Antibody**  
**Rabbit mAb**  
**Catalog # AP91841****Specification**

---

**MIB1 / DIP1 Antibody - Product Information**

Application	WB, IHC, ICC
Primary Accession	<a href="#">Q86YT6</a>
Clonality	Monoclonal
<b>Other Names</b>	
Dip1; LVNC7; MIB; mib1; ZZANK2; ZZZ6;	
Isotype	Rabbit IgG
Host	Rabbit
Calculated MW	110136 Da

**MIB1 / DIP1 Antibody - Additional Information**

Purification	Affinity-chromatography
Immunogen	A synthesized peptide derived from human MIB1 / DIP1
Description	E3 ubiquitin-protein ligase that mediates ubiquitination of Delta receptors, which act as ligands of Notch proteins. Positively regulates the Delta-mediated Notch signaling by ubiquitinating the intracellular domain of Delta, leading to endocytosis of Delta receptors.
Storage Condition and Buffer	Rabbit IgG in phosphate buffered saline , pH 7.4, 150mM NaCl, 0.02% sodium azide and 50% glycerol. Store at +4°C short term. Store at -20°C long term. Avoid freeze / thaw cycle.

**MIB1 / DIP1 Antibody - Protein Information****Name** MIB1**Synonyms** DIP1, KIAA1323, ZZANK2**Function**

E3 ubiquitin-protein ligase that mediates ubiquitination of Delta receptors, which act as ligands of Notch proteins. Positively regulates the Delta-mediated Notch signaling by ubiquitinating the intracellular domain of Delta, leading to endocytosis of Delta receptors. Probably mediates ubiquitination and subsequent proteasomal degradation of DAPK1, thereby antagonizing anti-apoptotic effects of DAPK1 to promote TNF-induced apoptosis (By similarity). Involved in ubiquitination of centriolar satellite CEP131, CEP290 and PCM1 proteins and hence inhibits primary cilium formation in proliferating cells. Mediates 'Lys-63'-linked polyubiquitination of TBK1, which probably participates in kinase activation.

**Cellular Location**

Cytoplasm. Cytoplasm, cytoskeleton, microtubule organizing center, centrosome, centriolar satellite. Cell membrane. Note=Localizes to the plasma membrane (By similarity) According to PubMed:15048887, it is mitochondrial, however such localization remains unclear. Displaced from centriolar satellites in response to cellular stress, such as ultraviolet light (UV) radiation or heat shock.

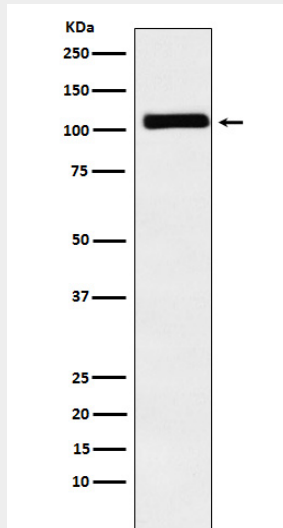
**Tissue Location**

Widely expressed at low level. Expressed at higher level in spinal cord, ovary, whole brain, and all specific brain regions examined.

**MIB1 / DIP1 Antibody - Protocols**

Provided below are standard protocols that you may find useful for product applications.

- [Western Blot](#)
- [Blocking Peptides](#)
- [Dot Blot](#)
- [Immunohistochemistry](#)
- [Immunofluorescence](#)
- [Immunoprecipitation](#)
- [Flow Cytometry](#)
- [Cell Culture](#)

**MIB1 / DIP1 Antibody - Images**

Western blot analysis of MIB1 / DIP1 expression in Caco2 cell lysate.