

Mesothelin Antibody
Rabbit mAb
Catalog # AP91838**Specification**

Mesothelin Antibody - Product Information

Application **WB, IHC, IP**
Primary Accession [O13421](#)
Clonality **Monoclonal**
Other Names
CAK1; Mesothelin; MPF; Msln; SMR; SMRP;

Isotype **Rabbit IgG**
Host **Rabbit**
Calculated MW **68986 Da**

Mesothelin Antibody - Additional Information

Purification **Affinity-chromatography**
Immunogen **A synthesized peptide derived from human Mesothelin**
Description **Membrane-anchored forms may play a role in cellular adhesion.**
Storage Condition and Buffer **Rabbit IgG in phosphate buffered saline , pH 7.4, 150mM NaCl, 0.02% sodium azide and 50% glycerol. Store at +4°C short term. Store at -20°C long term. Avoid freeze / thaw cycle.**

Mesothelin Antibody - Protein Information

Name MSLN

Synonyms MPF

Function

Membrane-anchored forms may play a role in cellular adhesion.

Cellular Location

Cell membrane; Lipid-anchor, GPI-anchor. Golgi apparatus [Isoform 3]: Secreted.

Tissue Location

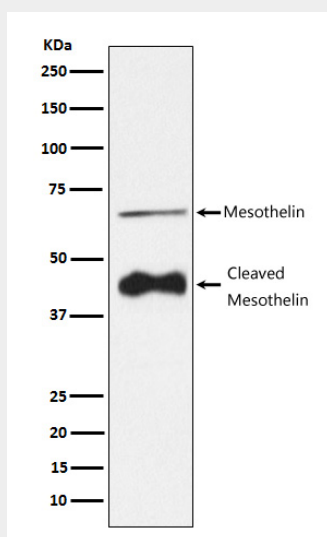
Expressed in lung. Expressed at low levels in heart, placenta and kidney. Expressed in mesothelial cells. Highly expressed in mesotheliomas, ovarian cancers, and some squamous cell carcinomas (at protein level).

Mesothelin Antibody - Protocols

Provided below are standard protocols that you may find useful for product applications.

- [Western Blot](#)
- [Blocking Peptides](#)
- [Dot Blot](#)
- [Immunohistochemistry](#)
- [Immunofluorescence](#)
- [Immunoprecipitation](#)
- [Flow Cytometry](#)
- [Cell Culture](#)

Mesothelin Antibody - Images



Western blot analysis of Mesothelin expression in HeLa cell lysate.