

Casein Kinase 2 beta Antibody
Rabbit mAb
Catalog # AP91832**Specification****Casein Kinase 2 beta Antibody - Product Information**

Application	WB, IHC, IP
Primary Accession	P67870
Reactivity	Rat
Clonality	Monoclonal
Other Names	
CK II beta; CK2B; CK2N; CSK2B; CSNK 2B; csnk2b; G5A; Phosvitin; Protein G5a;	
Isotype	Rabbit IgG
Host	Rabbit
Calculated MW	24942 Da

Casein Kinase 2 beta Antibody - Additional Information

Purification	Affinity-chromatography
Immunogen	A synthesized peptide derived from human Casein Kinase 2 beta
Description	Participates in Wnt signaling (By similarity). Plays a complex role in regulating the basal catalytic activity of the alpha subunit.
Storage Condition and Buffer	Rabbit IgG in phosphate buffered saline , pH 7.4, 150mM NaCl, 0.02% sodium azide and 50% glycerol. Store at +4°C short term. Store at -20°C long term. Avoid freeze / thaw cycle.

Casein Kinase 2 beta Antibody - Protein Information**Name** CSNK2B ([HGNC:2460](#))**Synonyms** CK2N, G5A**Function**

Regulatory subunit of casein kinase II/CK2. As part of the kinase complex regulates the basal catalytic activity of the alpha subunit a constitutively active serine/threonine-protein kinase that phosphorylates a large number of substrates containing acidic residues C-terminal to the phosphorylated serine or threonine (PubMed: [11239457](http://www.uniprot.org/citations/11239457), PubMed: [16818610](http://www.uniprot.org/citations/16818610)). Participates in Wnt signaling (By similarity).

Cellular Location

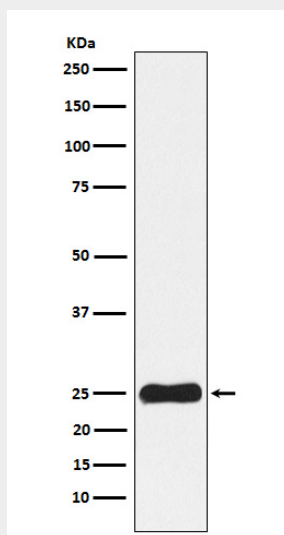
Nucleus.

Casein Kinase 2 beta Antibody - Protocols

Provided below are standard protocols that you may find useful for product applications.

- [Western Blot](#)
- [Blocking Peptides](#)
- [Dot Blot](#)
- [Immunohistochemistry](#)
- [Immunofluorescence](#)
- [Immunoprecipitation](#)
- [Flow Cytometry](#)
- [Cell Culture](#)

Casein Kinase 2 beta Antibody - Images



Western blot analysis of Casein Kinase 2 beta expression in HepG2 cell lysate.