

**CD162 Antibody**  
Rabbit mAb  
Catalog # AP91831

## Specification

---

### CD162 Antibody - Product Information

Application	WB, IHC, ICC, IP
Primary Accession	<a href="#">O14242</a>
Clonality	<b>Monoclonal</b>
<b>Other Names</b>	
CD162; CLA; PSGL1; SELPLG;	
Isotype	<b>Rabbit IgG</b>
Host	<b>Rabbit</b>
Calculated MW	<b>43201 Da</b>

### CD162 Antibody - Additional Information

Purification	<b>Affinity-chromatography</b>
Immunogen	<b>A synthesized peptide derived from human CD162</b>
Description	<b>A SLe(x)-type proteoglycan, which through high affinity, calcium-dependent interactions with E-, P- and L-selectins, mediates rapid rolling of leukocytes over vascular surfaces during the initial steps in inflammation. Critical for the initial leukocyte capture.</b>
Storage Condition and Buffer	<b>Rabbit IgG in phosphate buffered saline , pH 7.4, 150mM NaCl, 0.02% sodium azide and 50% glycerol. Store at +4°C short term. Store at -20°C long term. Avoid freeze / thaw cycle.</b>

### CD162 Antibody - Protein Information

**Name** SELPLG

#### **Function**

A SLe(x)-type proteoglycan, which through high affinity, calcium-dependent interactions with E-, P- and L-selectins, mediates rapid rolling of leukocytes over vascular surfaces during the initial steps in inflammation. Critical for the initial leukocyte capture.

#### **Cellular Location**

Membrane; Single-pass type I membrane protein.

#### **Tissue Location**

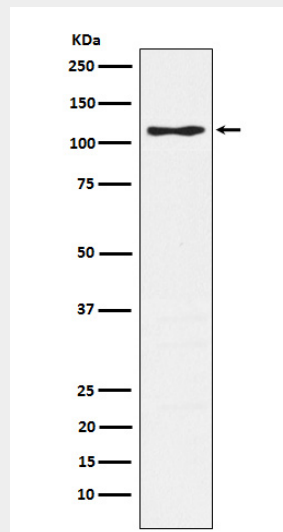
Expressed on neutrophils, monocytes and most lymphocytes

## CD162 Antibody - Protocols

Provided below are standard protocols that you may find useful for product applications.

- [Western Blot](#)
- [Blocking Peptides](#)
- [Dot Blot](#)
- [Immunohistochemistry](#)
- [Immunofluorescence](#)
- [Immunoprecipitation](#)
- [Flow Cytometry](#)
- [Cell Culture](#)

## CD162 Antibody - Images



Western blot analysis of CD162 expression in Jurkat cell lysate.