

Gelsolin Antibody
Rabbit mAb
Catalog # AP91830**Specification**

Gelsolin Antibody - Product Information

Application	WB, IHC, FC, ICC
Primary Accession	P06396
Clonality	Monoclonal
Other Names	
ADF; AGEL; Brevin; Gelsolin; Gsn;	
Isotype	Rabbit IgG
Host	Rabbit
Calculated MW	85698 Da

Gelsolin Antibody - Additional Information

Purification	Affinity-chromatography
Immunogen	A synthesized peptide derived from human Gelsolin
Description	Calcium-regulated, actin-modulating protein that binds to the plus (or barbed) ends of actin monomers or filaments, preventing monomer exchange (end-blocking or capping). It can promote the assembly of monomers into filaments (nucleation) as well as sever filaments already formed. Plays a role in ciliogenesis.
Storage Condition and Buffer	Rabbit IgG in phosphate buffered saline , pH 7.4, 150mM NaCl, 0.02% sodium azide and 50% glycerol. Store at +4°C short term. Store at -20°C long term. Avoid freeze / thaw cycle.

Gelsolin Antibody - Protein Information**Name** GSN**Function**

Calcium-regulated, actin-modulating protein that binds to the plus (or barbed) ends of actin monomers or filaments, preventing monomer exchange (end-blocking or capping). It can promote the assembly of monomers into filaments (nucleation) as well as sever filaments already formed (PubMed:<[a href="http://www.uniprot.org/citations/19666512" target="_blank">19666512](http://www.uniprot.org/citations/19666512)). Plays a role in ciliogenesis (PubMed:<[a href="http://www.uniprot.org/citations/20393563" target="_blank">20393563](http://www.uniprot.org/citations/20393563)).

Cellular Location

[Isoform 2]: Cytoplasm, cytoskeleton.

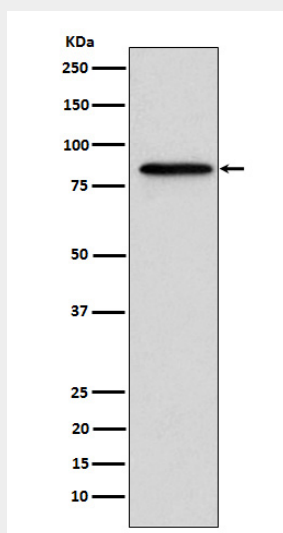
Tissue Location

Phagocytic cells, platelets, fibroblasts, nonmuscle cells, smooth and skeletal muscle cells

Gelsolin Antibody - Protocols

Provided below are standard protocols that you may find useful for product applications.

- [Western Blot](#)
- [Blocking Peptides](#)
- [Dot Blot](#)
- [Immunohistochemistry](#)
- [Immunofluorescence](#)
- [Immunoprecipitation](#)
- [Flow Cytometry](#)
- [Cell Culture](#)

Gelsolin Antibody - Images

Western blot analysis of Gelsolin expression in A431 cell lysate.