

**KDM4A Antibody**  
Rabbit mAb  
Catalog # AP91825

## Specification

---

### KDM4A Antibody - Product Information

Application	WB, IHC, IP
Primary Accession	<a href="#">O75164</a>
Reactivity	Rat
Clonality	Monoclonal
<b>Other Names</b>	
JHDM3A; JMJD2; JMJD2A; KDM4A; TDRD14A;	
Isotype	Rabbit IgG
Host	Rabbit
Calculated MW	120662 Da

### KDM4A Antibody - Additional Information

Purification	Affinity-chromatography
Immunogen	A synthesized peptide derived from human KDM4A / JHDM3A / JMJD2A
Description	Histone demethylase that specifically demethylates 'Lys-9' and 'Lys-36' residues of histone H3, thereby playing a central role in histone code. Does not demethylate histone H3 'Lys-4', H3 'Lys-27' nor H4 'Lys-20'. Demethylates trimethylated H3 'Lys-9' and H3 'Lys-36' residue, while it has no activity on mono- and dimethylated residues.
Storage Condition and Buffer	Rabbit IgG in phosphate buffered saline , pH 7.4, 150mM NaCl, 0.02% sodium azide and 50% glycerol. Store at +4°C short term. Store at -20°C long term. Avoid freeze / thaw cycle.

### KDM4A Antibody - Protein Information

**Name** KDM4A

**Synonyms** JHDM3A, JMJD2, JMJD2A, KIAA0677

#### Function

Histone demethylase that specifically demethylates 'Lys-9' and 'Lys-36' residues of histone H3, thereby playing a central role in histone code (PubMed:<a href="http://www.uniprot.org/citations/26741168" target="\_blank">26741168</a>, PubMed:<a href="http://www.uniprot.org/citations/21768309" target="\_blank">21768309</a>). Does not demethylate histone H3 'Lys-4', H3 'Lys-27' nor H4 'Lys-20'. Demethylates trimethylated H3 'Lys-9'

and H3 'Lys-36' residue, while it has no activity on mono- and dimethylated residues. Demethylation of Lys residue generates formaldehyde and succinate. Participates in transcriptional repression of ASCL2 and E2F-responsive promoters via the recruitment of histone deacetylases and NCOR1, respectively.

#### Cellular Location

Nucleus {ECO:0000255|PROSITE-ProRule:PRU00537, ECO:0000269|PubMed:15927959, ECO:0000269|PubMed:16024779}

#### Tissue Location

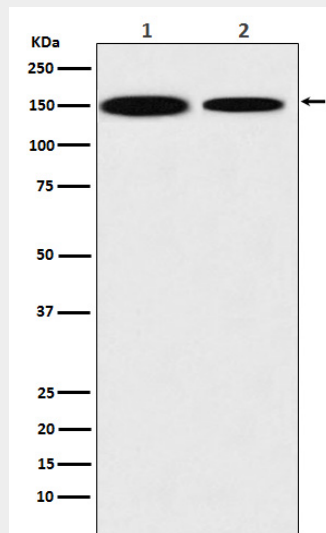
Ubiquitous..

### KDM4A Antibody - Protocols

Provided below are standard protocols that you may find useful for product applications.

- [Western Blot](#)
- [Blocking Peptides](#)
- [Dot Blot](#)
- [Immunohistochemistry](#)
- [Immunofluorescence](#)
- [Immunoprecipitation](#)

### KDM4A Antibody - Images



Western blot analysis of KDM4A / JHDM3A / JMJD2A expression in (1) HEK293 cell lysate; (2) NIH3T3 cell lysate.