

**Cellubrevin Antibody**  
Rabbit mAb  
Catalog # AP91815

**Specification**

---

**Cellubrevin Antibody - Product Information**

Application	WB, FC, ICC, IP
Primary Accession	<a href="#">Q15836</a>
Clonality	Monoclonal
<b>Other Names</b>	
CEB; Cellubrevin; Synaptobrevin 3; VAMP3;	
Isotype	Rabbit IgG
Host	Rabbit
Calculated MW	11309 Da

**Cellubrevin Antibody - Additional Information**

Purification	Affinity-chromatography
Immunogen	A synthesized peptide derived from human Cellubrevin
Description	SNARE involved in vesicular transport from the late endosomes to the trans-Golgi network.
Storage Condition and Buffer	Rabbit IgG in phosphate buffered saline , pH 7.4, 150mM NaCl, 0.02% sodium azide and 50% glycerol. Store at +4°C short term. Store at -20°C long term. Avoid freeze / thaw cycle.

**Cellubrevin Antibody - Protein Information**

**Name** VAMP3

**Synonyms** SYB3

**Function**

SNARE involved in vesicular transport from the late endosomes to the trans-Golgi network.

**Cellular Location**

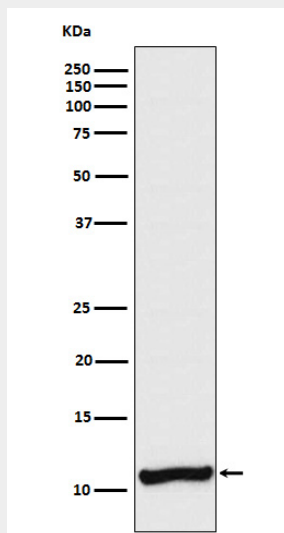
Early endosome membrane; Single-pass type IV membrane protein. Recycling endosome membrane; Single-pass type IV membrane protein. Synapse, synaptosome

**Cellubrevin Antibody - Protocols**

Provided below are standard protocols that you may find useful for product applications.

- [Western Blot](#)
- [Blocking Peptides](#)
- [Dot Blot](#)
- [Immunohistochemistry](#)
- [Immunofluorescence](#)
- [Immunoprecipitation](#)
- [Flow Cytometry](#)
- [Cell Culture](#)

### Cellubrevin Antibody - Images



Western blot analysis of Cellubrevin expression in A375 cell lysate.