

**SIRP alpha Antibody**  
**Rabbit mAb**  
**Catalog # AP91810****Specification**

---

**SIRP alpha Antibody - Product Information**

|   |                        |
|---|------------------------|
| Application   | WB, FC                 |
| Primary Accession   | <a href="#">P78324</a> |
| Reactivity  | Rat                    |
| Clonality   | Monoclonal             |
| <b>Other Names</b>  |                        |
| CD172a; MFR; MYD 1; p84; PTPNS1; SHPS1; SIRP; SIRPA; SIRPalpha; SIRPalpha1; SIRPalpha2; SIRPalpha3; |                        |
| Isotype   | Rabbit IgG             |
| Host  | Rabbit                 |
| Calculated MW   | 54967 Da               |

**SIRP alpha Antibody - Additional Information**

|                              |  |
|------------------------------|--|
| Purification                 | Affinity-chromatography  |
| Immunogen                    | A synthesized peptide derived from human SIRP alpha  |
| Description                  | Immunoglobulin-like cell surface receptor for CD47. Acts as docking protein and induces translocation of PTPN6, PTPN11 and other binding partners from the cytosol to the plasma membrane. Supports adhesion of cerebellar neurons, neurite outgrowth and glial cell attachment. |
| Storage Condition and Buffer | Rabbit IgG in phosphate buffered saline , pH 7.4, 150mM NaCl, 0.02% sodium azide and 50% glycerol. Store at +4°C short term. Store at -20°C long term. Avoid freeze / thaw cycle.  |

**SIRP alpha Antibody - Protein Information****Name** SIRPA**Synonyms** BIT, MFR, MYD1, PTPNS1, SHPS1, SIRP**Function**

Immunoglobulin-like cell surface receptor for CD47. Acts as docking protein and induces translocation of PTPN6, PTPN11 and other binding partners from the cytosol to the plasma membrane. Supports adhesion of cerebellar neurons, neurite outgrowth and glial cell attachment. May play a key role in intracellular signaling during synaptogenesis and in synaptic function (By similarity). Involved in the negative regulation of receptor tyrosine kinase-coupled cellular responses induced by cell adhesion, growth factors or insulin. Mediates negative regulation of

phagocytosis, mast cell activation and dendritic cell activation. CD47 binding prevents maturation of immature dendritic cells and inhibits cytokine production by mature dendritic cells. Plays a role in antiviral immunity and limits new world arenavirus infection by decreasing virus internalization (By similarity). Receptor for THBS1 (PubMed:<a href="http://www.uniprot.org/citations/24511121" target="\_blank">24511121</a>). Interaction with THBS1 stimulates phosphorylation of SIRPA (By similarity). In response to THBS1, involved in ROS signaling in non-phagocytic cells, stimulating NADPH oxidase-derived ROS production (PubMed:<a href="http://www.uniprot.org/citations/24511121" target="\_blank">24511121</a>).

#### Cellular Location

Membrane; Single-pass type I membrane protein.

#### Tissue Location

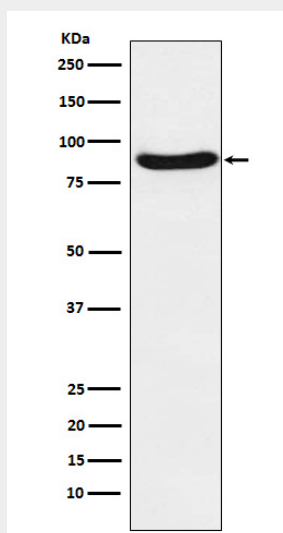
Ubiquitous. Highly expressed in brain. Detected on myeloid cells, but not T-cells. Detected at lower levels in heart, placenta, lung, testis, ovary, colon, liver, small intestine, prostate, spleen, kidney, skeletal muscle and pancreas

### SIRP alpha Antibody - Protocols

Provided below are standard protocols that you may find useful for product applications.

- [Western Blot](#)
- [Blocking Peptides](#)
- [Dot Blot](#)
- [Immunohistochemistry](#)
- [Immunofluorescence](#)
- [Immunoprecipitation](#)
- [Flow Cytometry](#)
- [Cell Culture](#)

### SIRP alpha Antibody - Images



Western blot analysis of SIRP alpha expression in SW480 cell lysate.