

SULT2A1 Antibody
Rabbit mAb
Catalog # AP91808**Specification****SULT2A1 Antibody - Product Information**

Application	WB, IHC, FC, ICC
Primary Accession	Q06520
Reactivity	Rat
Clonality	Monoclonal
Other Names	
HST; ST2; STD; hSTa; DHEAS; ST2A1; ST2A3; DHEA-ST;	
Isotype	Rabbit IgG
Host	Rabbit
Calculated MW	33780 Da

SULT2A1 Antibody - Additional Information

Purification	Affinity-chromatography
Immunogen	A synthesized peptide derived from human SULT2A1
Description	Catalyzes the sulfation of steroids and bile acids in the liver and adrenal glands.
Storage Condition and Buffer	Rabbit IgG in phosphate buffered saline , pH 7.4, 150mM NaCl, 0.02% sodium azide and 50% glycerol. Store at +4°C short term. Store at -20°C long term. Avoid freeze / thaw cycle.

SULT2A1 Antibody - Protein Information**Name** SULT2A1**Synonyms** HST, STD**Function**

Sulfotransferase that utilizes 3'-phospho-5'-adenylyl sulfate (PAPS) as sulfonate donor to catalyze the sulfonation of steroids and bile acids in the liver and adrenal glands. Mediates the sulfation of a wide range of steroids and sterols, including pregnenolone, androsterone, DHEA, bile acids, cholesterol and as well many xenobiotics that contain alcohol and phenol functional groups (PubMed: [14573603](http://www.uniprot.org/citations/14573603), PubMed: [18042734](http://www.uniprot.org/citations/18042734), PubMed: [19589875](http://www.uniprot.org/citations/19589875), PubMed: [21187059](http://www.uniprot.org/citations/21187059), PubMed: [2268288](http://www.uniprot.org/citations/2268288), PubMed: [29671343](http://www.uniprot.org/citations/29671343), PubMed: [7678732](http://www.uniprot.org/citations/7678732), PubMed: [7854148](http://www.uniprot.org/citations/7854148)).

Sulfonation increases the water solubility of most compounds, and therefore their renal excretion, but it can also result in bioactivation to form active metabolites. Plays an important role in maintaining steroid and lipid homeostasis (PubMed:14573603, PubMed:19589875, PubMed:21187059). Plays a key role in bile acid metabolism (PubMed:2268288). In addition, catalyzes the metabolic activation of potent carcinogenic polycyclic arylmethanols (By similarity).

Cellular Location

Cytoplasm.

Tissue Location

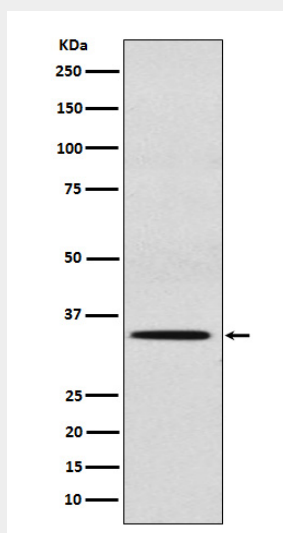
Liver, adrenal and at lower level in the kidney. Is present in human fetus in higher level in the adrenal than the liver and the kidney

SULT2A1 Antibody - Protocols

Provided below are standard protocols that you may find useful for product applications.

- [Western Blot](#)
- [Blocking Peptides](#)
- [Dot Blot](#)
- [Immunohistochemistry](#)
- [Immunofluorescence](#)
- [Immunoprecipitation](#)
- [Flow Cytometry](#)
- [Cell Culture](#)

SULT2A1 Antibody - Images



Western blot analysis of SULT2A1 expression in HepG2 cell lysate.