

HES5 Antibody
Rabbit mAb
Catalog # AP91801

Specification

HES5 Antibody - Product Information

Application	WB, IHC, IP
Primary Accession	Q5TA89
Reactivity	Rat
Clonality	Monoclonal
Other Names	
HES 5; Hes5;	
Isotype	Rabbit IgG
Host	Rabbit
Calculated MW	18226 Da

HES5 Antibody - Additional Information

Purification	Affinity-chromatography
Immunogen	A synthesized peptide derived from human HES5
Description	Transcriptional repressor of genes that require a bHLH protein for their transcription.
Storage Condition and Buffer	Rabbit IgG in phosphate buffered saline , pH 7.4, 150mM NaCl, 0.02% sodium azide and 50% glycerol. Store at +4°C short term. Store at -20°C long term. Avoid freeze / thaw cycle.

HES5 Antibody - Protein Information

Name HES5

Synonyms BHLHB38

Function

Transcriptional repressor of genes that require a bHLH protein for their transcription. Plays an important role as neurogenesis negative regulator (By similarity).

Cellular Location

Nucleus {ECO:0000255|PROSITE-ProRule:PRU00380, ECO:0000255|PROSITE-ProRule:PRU00981}

Tissue Location

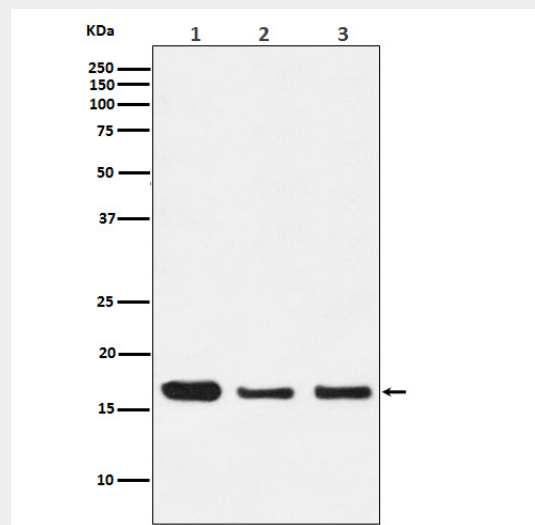
Expressed in fetal heart and brain tumors.

HES5 Antibody - Protocols

Provided below are standard protocols that you may find useful for product applications.

- [Western Blot](#)
- [Blocking Peptides](#)
- [Dot Blot](#)
- [Immunohistochemistry](#)
- [Immunofluorescence](#)
- [Immunoprecipitation](#)
- [Flow Cytometry](#)
- [Cell Culture](#)

HES5 Antibody - Images



Western blot analysis of HES5 expression in (1) 293 cell lysate; (2) Mouse spleen lysate; (3) C6 cell lysate.