

**SAE1 Antibody**  
Rabbit mAb  
Catalog # AP91797

## Specification

---

### SAE1 Antibody - Product Information

Application	WB, FC, ICC, IP
Primary Accession	<a href="#">Q9UBE0</a>
Reactivity	Rat
Clonality	Monoclonal
<b>Other Names</b>	
AOS1; HSPC140; Sae1; SUA1; UBLE1A;	
Isotype	Rabbit IgG
Host	Rabbit
Calculated MW	38450 Da

### SAE1 Antibody - Additional Information

Purification	<b>Affinity-chromatography</b>
Immunogen	<b>A synthesized peptide derived from human SAE1</b>
Description	<b>The heterodimer acts as a E1 ligase for SUMO1, SUMO2, SUMO3, and probably SUMO4. It mediates ATP-dependent activation of SUMO proteins followed by formation of a thioester bond between a SUMO protein and a conserved active site cysteine residue on UBA2/SAE2.</b>
Storage Condition and Buffer	<b>Rabbit IgG in phosphate buffered saline , pH 7.4, 150mM NaCl, 0.02% sodium azide and 50% glycerol. Store at +4°C short term. Store at -20°C long term. Avoid freeze / thaw cycle.</b>

### SAE1 Antibody - Protein Information

**Name** SAE1

**Synonyms** AOS1, SUA1, UBLE1A

#### **Function**

The heterodimer acts as an E1 ligase for SUMO1, SUMO2, SUMO3, and probably SUMO4. It mediates ATP-dependent activation of SUMO proteins followed by formation of a thioester bond between a SUMO protein and a conserved active site cysteine residue on UBA2/SAE2.

#### **Cellular Location**

Nucleus.

### Tissue Location

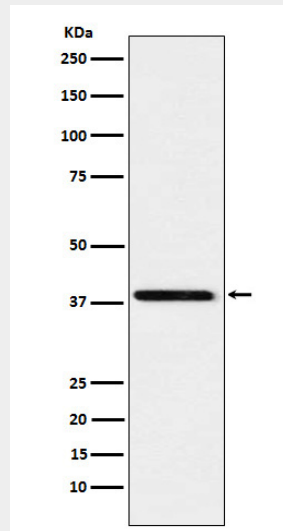
Expression level increases during S phase and drops in G2 phase (at protein level).

### SAE1 Antibody - Protocols

Provided below are standard protocols that you may find useful for product applications.

- [Western Blot](#)
- [Blocking Peptides](#)
- [Dot Blot](#)
- [Immunohistochemistry](#)
- [Immunofluorescence](#)
- [Immunoprecipitation](#)
- [Flow Cytometry](#)
- [Cell Culture](#)

### SAE1 Antibody - Images



Western blot analysis of SAE1 expression in Jurkat cell lysate.