

**TGF alpha Antibody**  
Rabbit mAb  
Catalog # AP91796

## Specification

---

### TGF alpha Antibody - Product Information

Application **WB, IHC, ICC, IP**  
Primary Accession [P01135](#)  
Clonality **Monoclonal**  
**Other Names**  
ETGF; TFGA; TGF A; TGF-alpha; Tgfa; Wa1; Waved 1;

Isotype **Rabbit IgG**  
Host **Rabbit**  
Calculated MW **17006 Da**

### TGF alpha Antibody - Additional Information

Purification **Affinity-chromatography**  
Immunogen **A synthesized peptide derived from human TGF alpha**  
Description **TGF alpha is a mitogenic polypeptide that is able to bind to the EGF receptor and to act synergistically with TGF beta to promote anchorage-independent cell proliferation in soft agar.**  
Storage Condition and Buffer **Rabbit IgG in phosphate buffered saline , pH 7.4, 150mM NaCl, 0.02% sodium azide and 50% glycerol. Store at +4°C short term. Store at -20°C long term. Avoid freeze / thaw cycle.**

### TGF alpha Antibody - Protein Information

**Name** TGFA

#### **Function**

TGF alpha is a mitogenic polypeptide that is able to bind to the EGF receptor/EGFR and to act synergistically with TGF beta to promote anchorage-independent cell proliferation in soft agar.

#### **Cellular Location**

[Transforming growth factor alpha]: Secreted, extracellular space

#### **Tissue Location**

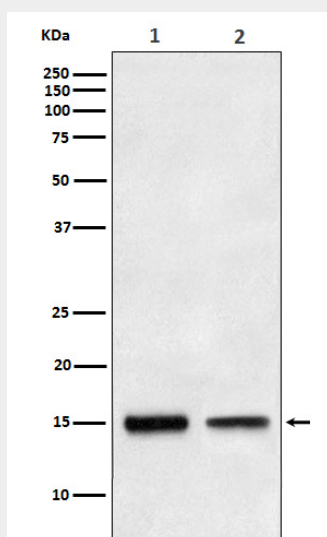
Isoform 1, isoform 3 and isoform 4 are expressed in keratinocytes and tumor-derived cell lines

### TGF alpha Antibody - Protocols

Provided below are standard protocols that you may find useful for product applications.

- [Western Blot](#)
- [Blocking Peptides](#)
- [Dot Blot](#)
- [Immunohistochemistry](#)
- [Immunofluorescence](#)
- [Immunoprecipitation](#)
- [Flow Cytometry](#)
- [Cell Culture](#)

### TGF alpha Antibody - Images



Western blot analysis of TGF alpha expression in (1) HepG2 cell lysate; (2) Human fetal liver lysate.