

**Alkaline phosphatase Antibody**  
Rabbit mAb  
Catalog # AP91789

**Specification**

---

**Alkaline phosphatase Antibody - Product Information**

Application	WB, IHC
Primary Accession	<a href="#">P09923</a>
Clonality	Monoclonal
<b>Other Names</b>	
Alpi; Glycerophosphatase; IAP;	
Isotype	Rabbit IgG
Host	Rabbit
Calculated MW	56812 Da

**Alkaline phosphatase Antibody - Additional Information**

Purification	Affinity-chromatography
Immunogen	A synthesized peptide derived from human intestinal alkaline phosphatase
Description	In most mammals there are four different isozymes: placental, placental-like, intestinal and tissue non-specific (liver/bone/kidney).
Storage Condition and Buffer	Rabbit IgG in phosphate buffered saline , pH 7.4, 150mM NaCl, 0.02% sodium azide and 50% glycerol. Store at +4°C short term. Store at -20°C long term. Avoid freeze / thaw cycle.

**Alkaline phosphatase Antibody - Protein Information**

**Name** ALPI

**Function**

Alkaline phosphatase that can hydrolyze various phosphate compounds.

**Cellular Location**

Cell membrane {ECO:0000250|UniProtKB:P15693}; Lipid-anchor, GPI-anchor {ECO:0000250|UniProtKB:P15693}

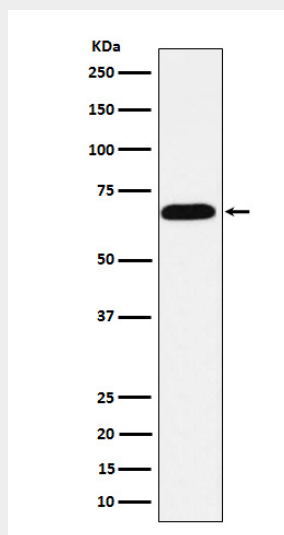
**Alkaline phosphatase Antibody - Protocols**

Provided below are standard protocols that you may find useful for product applications.

- [Western Blot](#)

- [Blocking Peptides](#)
- [Dot Blot](#)
- [Immunohistochemistry](#)
- [Immunofluorescence](#)
- [Immunoprecipitation](#)
- [Flow Cytometry](#)
- [Cell Culture](#)

### Alkaline phosphatase Antibody - Images



Western blot analysis of intestinal alkaline phosphatase expression in HeLa cell lysate.