

Furin Antibody
Rabbit mAb
Catalog # AP91781

Specification

Furin Antibody - Product Information

Application	WB, IHC, ICC
Primary Accession	P09958
Reactivity	Rat
Clonality	Monoclonal
Other Names	
FUR; FURIN; PACE; PCSK3; SPC1;	
Isotype	Rabbit IgG
Host	Rabbit
Calculated MW	86678 Da

Furin Antibody - Additional Information

Purification	Affinity-chromatography
Immunogen	A synthesized peptide derived from human Furin
Description	Furin is likely to represent the ubiquitous endoprotease activity within constitutive secretory pathways and capable of cleavage at the RX(K/R)R consensus motif. Rabbit IgG in phosphate buffered saline , pH 7.4, 150mM NaCl, 0.02% sodium azide and 50% glycerol. Store at +4°C short term. Store at -20°C long term. Avoid freeze / thaw cycle.
Storage Condition and Buffer	

Furin Antibody - Protein Information

Name FURIN {ECO:0000303|PubMed:7690548, ECO:0000312|HGNC:HGNC:8568}

Function

Ubiquitous endoprotease within constitutive secretory pathways capable of cleavage at the RX(K/R)R consensus motif (PubMed: [11799113](http://www.uniprot.org/citations/11799113), PubMed: [1629222](http://www.uniprot.org/citations/1629222), PubMed: [1713771](http://www.uniprot.org/citations/1713771), PubMed: [2251280](http://www.uniprot.org/citations/2251280), PubMed: [24666235](http://www.uniprot.org/citations/24666235), PubMed: [25974265](http://www.uniprot.org/citations/25974265), PubMed: [7592877](http://www.uniprot.org/citations/7592877), PubMed: [7690548](http://www.uniprot.org/citations/7690548), PubMed: [9130696](http://www.uniprot.org/citations/9130696)). Mediates processing of TGF β 1, an essential step in TGF- β -1 activation (PubMed: [7737999](http://www.uniprot.org/citations/7737999))

target="_blank">7737999). Converts through proteolytic cleavage the non-functional Brain natriuretic factor prohormone into its active hormone BNP(1-32) (PubMed:20489134, PubMed:21763278). By mediating processing of accessory subunit ATP6AP1/Ac45 of the V-ATPase, regulates the acidification of dense-core secretory granules in islets of Langerhans cells (By similarity).

Cellular Location

Golgi apparatus, trans-Golgi network membrane; Single-pass type I membrane protein. Cell membrane; Single-pass type I membrane protein. Secreted. Endosome membrane; Single-pass type I membrane protein. Note=Shuttles between the trans-Golgi network and the cell surface (PubMed:11799113, PubMed:9412467). Propeptide cleavage is a prerequisite for exit of furin molecules out of the endoplasmic reticulum (ER). A second cleavage within the propeptide occurs in the trans Golgi network (TGN), followed by the release of the propeptide and the activation of furin (PubMed:11799113)

Tissue Location

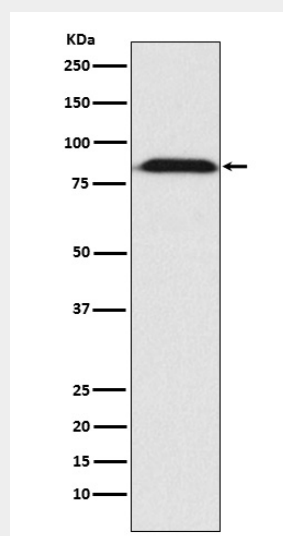
Seems to be expressed ubiquitously.

Furin Antibody - Protocols

Provided below are standard protocols that you may find useful for product applications.

- [Western Blot](#)
- [Blocking Peptides](#)
- [Dot Blot](#)
- [Immunohistochemistry](#)
- [Immunofluorescence](#)
- [Immunoprecipitation](#)
- [Flow Cytometry](#)
- [Cell Culture](#)

Furin Antibody - Images



Western blot analysis of Furin expression in HepG2 cell lysate.