

Geminin Antibody
Rabbit mAb
Catalog # AP91780

Specification

Geminin Antibody - Product Information

Application **WB, IHC, ICC**
Primary Accession [O75496](#)
Clonality **Monoclonal**
Other Names
Gem; Geminin; GMNN;

Isotype **Rabbit IgG**
Host **Rabbit**
Calculated MW **23565 Da**

Geminin Antibody - Additional Information

Purification **Affinity-chromatography**
Immunogen **A synthesized peptide derived from human Geminin**
Description **Inhibits DNA replication by preventing the incorporation of MCM complex into prereplication complex (pre-RC). It is degraded during the mitotic phase of the cell cycle. Its destruction at the metaphase-anaphase transition permits replication in the succeeding cell cycle.**
Storage Condition and Buffer **Rabbit IgG in phosphate buffered saline , pH 7.4, 150mM NaCl, 0.02% sodium azide and 50% glycerol. Store at +4°C short term. Store at -20°C long term. Avoid freeze / thaw cycle.**

Geminin Antibody - Protein Information

Name GMNN

Function

Inhibits DNA replication by preventing the incorporation of MCM complex into pre-replication complex (pre-RC) (PubMed: [14993212](http://www.uniprot.org/citations/14993212), PubMed: [20129055](http://www.uniprot.org/citations/20129055), PubMed: [24064211](http://www.uniprot.org/citations/24064211), PubMed: [9635433](http://www.uniprot.org/citations/9635433)). It is degraded during the mitotic phase of the cell cycle (PubMed: [14993212](http://www.uniprot.org/citations/14993212), PubMed: [24064211](http://www.uniprot.org/citations/24064211), PubMed: [9635433](http://www.uniprot.org/citations/9635433)). Its destruction at the metaphase- anaphase transition permits replication in the succeeding cell cycle

(PubMed:14993212, PubMed:24064211, PubMed:9635433). Inhibits histone acetyltransferase activity of KAT7/HBO1 in a CDT1-dependent manner, inhibiting histone H4 acetylation and DNA replication licensing (PubMed:20129055). Inhibits the transcriptional activity of a subset of Hox proteins, enrolling them in cell proliferative control (PubMed:22615398).

Cellular Location

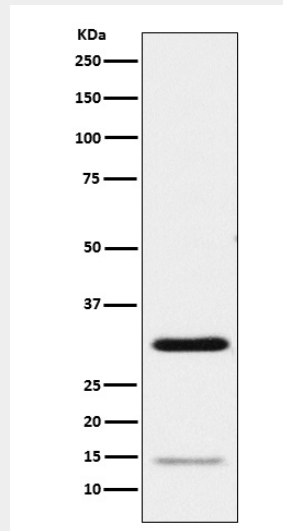
Cytoplasm. Nucleus. Note=Mainly cytoplasmic but can be relocalized to the nucleus.

Geminin Antibody - Protocols

Provided below are standard protocols that you may find useful for product applications.

- [Western Blot](#)
- [Blocking Peptides](#)
- [Dot Blot](#)
- [Immunohistochemistry](#)
- [Immunofluorescence](#)
- [Immunoprecipitation](#)
- [Flow Cytometry](#)
- [Cell Culture](#)

Geminin Antibody - Images



Western blot analysis of Geminin expression in HeLa cell lysate.